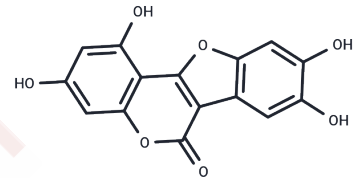


## Demethylwedelolactone

## Chemical Properties

CAS No. :	6468-55-9
Formula:	C <sub>15</sub> H <sub>8</sub> O <sub>7</sub>
Molecular Weight:	300.22
Storage:	Powder: -20°C for 3 years   In solvent: -80°C for 1 year Actual storage temperature shall be subject to the COA.



## Biological Description

Description	Demethylwedelolactone is a natural product isolated from Eclipta alba, has trypsin inhibitory effect an IC <sub>50</sub> of 3.0 μM. it exerts anti-invasive growth effect on breast cancer cells.
Targets(IC <sub>50</sub> )	Serine Protease
In vitro	demethylwedelolactone (DWEL) inhibited the anchorage-independent growth and also suppressed cell motility and cell invasion of MDA-MB-231 cells. DWEL reduced the activity and expression of matrix metalloproteinases (MMPs) involved in blocking the IκB-α/NFκB and MEK/ERK signaling pathways in MDA-MB-231 cells. Furthermore, DWEL suppressed the metastasis and lung colonization of the tumor cells in the nude mice. DWEL derivatives exert anti-invasive growth effect on breast cancer cells.

## Solubility Information

Solubility	DMSO: 22.5 mg/mL (74.95 mM), Sonication is recommended. (< 1 mg/ml refers to the product slightly soluble or insoluble)
------------	--

## Preparing Stock Solutions

	1mg	5mg	10mg
1 mM	3.3309 mL	16.6545 mL	33.3089 mL
5 mM	0.6662 mL	3.3309 mL	6.6618 mL
10 mM	0.3331 mL	1.6654 mL	3.3309 mL
50 mM	0.0666 mL	0.3331 mL	0.6662 mL

Please select the appropriate solvent to prepare the stock solution, according to the solubility of the product in different solvents. Please use it as soon as possible.

Note: The dilution table applies only to solid products. For liquid products, please calculate the stock solution based on the stated concentration and/or density.

Reference

Trypsin inhibitory effect of wedelolactone and demethylwedelolactone. Phytother Res. 2003 Apr;17(4):420-1.  
Chen P, Zhu Z, Geng H, et al. Integrated Spatial Metabolomics and Transcriptomics Decipher the Hepatoprotection Mechanisms of Wedelolactone and Demethylwedelolactone on Non-alcoholic Fatty Liver Disease. Journal of Pharmaceutical Analysis. 2023  
Demethylwedelolactone derivatives inhibit invasive growth in vitro and lung metastasis of MDA-MB-231 breast cancer cells in nude mice. Eur J Med Chem. 2012 Oct;56:361-7.

**Inhibitor · Natural Compounds · Compound Libraries · Recombinant Proteins**

This product is for Research Use Only · Not for Human or Veterinary or Therapeutic Use

Tel: 781-999-4286    E\_mail: info@targetmol.com    Address: 34 Washington Street, Wellesley Hills, MA 02481