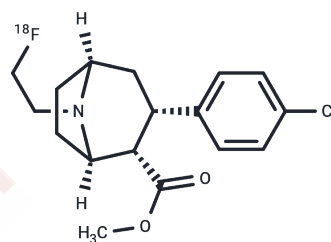


Fecnt F-18

Chemical Properties

CAS No. :	281667-89-8
Formula:	C ₁₇ H ₂₁ ClFNO ₂
Molecular Weight:	324.81
Storage:	Powder: -20°C for 3 years In solvent: -80°C for 1 year Actual storage temperature shall be subject to the COA.



Biological Description

Description	[F-18] FECNT has been widely used to calculate dopamine transporter (DAT) occupancy rates in the brains of non-human primates and can distinguish DAT density differences between Parkinson's disease and healthy human controls.
Targets(IC50)	Others

Preparing Stock Solutions

	1mg	5mg	10mg
1 mM	3.0787 mL	15.3936 mL	30.7872 mL
5 mM	0.6157 mL	3.0787 mL	6.1574 mL
10 mM	0.3079 mL	1.5394 mL	3.0787 mL
50 mM	0.0616 mL	0.3079 mL	0.6157 mL

Please select the appropriate solvent to prepare the stock solution, according to the solubility of the product in different solvents. Please use it as soon as possible.

Note: The dilution table applies only to solid products. For liquid products, please calculate the stock solution based on the stated concentration and/or density.

Reference

- Honer M, Hengerer B, Blagoev M, Hintermann S, Waldmeier P, Schubiger PA, Ametamey SM. Comparison of [18F] FDOPA, [18F]FMT and [18F]FECNT for imaging dopaminergic neurotransmission in mice. Nucl Med Biol. 2006 Jul;33(5):607-14. Epub 2006 Jun 12. PubMed PMID: 16843835.
- Votaw JR, Byas-Smith MG, Voll R, Halkar R, Goodman MM. Isoflurane alters the amount of dopamine transporter expressed on the plasma membrane in humans. Anesthesiology. 2004 Nov;101(5):1128-35. PubMed PMID: 15505448.
- Votaw JR, Howell LL, Martarello L, Hoffman JM, Kilts CD, Lindsey KP, Goodman MM. Measurement of dopamine transporter occupancy for multiple injections of cocaine using a single injection of [F-18]FECNT. Synapse. 2002 Jun 15;44(4):203-10. PubMed PMID: 11984856.

Inhibitor · Natural Compounds · Compound Libraries · Recombinant Proteins

This product is for Research Use Only · Not for Human or Veterinary or Therapeutic Use

Tel:781-999-4286 E_mail:info@targetmol.com Address:34 Washington Street,Wellesley Hills,MA 02481