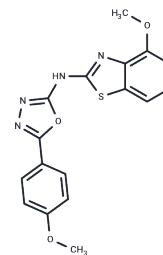


N106

## Chemical Properties

CAS No. : 862974-25-2  
 Formula: C<sub>17</sub>H<sub>14</sub>N<sub>4</sub>O<sub>3</sub>S  
 Molecular Weight: 354.38  
 Storage: Powder: -20°C for 3 years | In solvent: -80°C for 1 year  
 Actual storage temperature shall be subject to the COA.



## Biological Description

|               |  |
|---------------|--|
| Description   | N106 is an activator of the SUMO-activating enzyme, E1 ligase, and triggers intrinsic sumoylation of SERCA2a. N106 can be used in studies about heart failure.       |
| Targets(IC50) | Calcium Channel,E1/E2/E3 Enzyme  |
| In vitro      | N106 (10min) increases cell contractility, calcium-transient SERCA2a's ATPase activity and SUMOylation. These effects are sustained at 24h in cardiomyocytes[1].     |
| In vivo       | N106 (10 mg/kg) significantly improves ventricular function in mice with heart failure. N106(10mg/kg; i.v.) exhibits a half-life of 65.4min and a Cmax of 2.24μM[1]. |

## Solubility Information

|            |  |
|------------|--|
| Solubility | DMSO: 26.67 mg/mL (75.26 mM),Sonication is recommended.<br>(< 1 mg/ml refers to the product slightly soluble or insoluble) |
|------------|--|

## Preparing Stock Solutions

|       | 1mg       | 5mg        | 10mg       |
|-------|-----------|------------|------------|
| 1 mM  | 2.8218 mL | 14.1091 mL | 28.2183 mL |
| 5 mM  | 0.5644 mL | 2.8218 mL  | 5.6437 mL  |
| 10 mM | 0.2822 mL | 1.4109 mL  | 2.8218 mL  |
| 50 mM | 0.0564 mL | 0.2822 mL  | 0.5644 mL  |

Please select the appropriate solvent to prepare the stock solution, according to the solubility of the product in different solvents. Please use it as soon as possible.

Note: The dilution table applies only to solid products. For liquid products, please calculate the stock solution based on the stated concentration and/or density.

Reference

Kho C, et al. Small-molecule activation of SERCA2a SUMOylation for the treatment of heart failure. Nat Commun. 2015 Jun 12;6:7229.

**Inhibitor · Natural Compounds · Compound Libraries · Recombinant Proteins**

This product is for Research Use Only · Not for Human or Veterinary or Therapeutic Use

Tel:781-999-4286 E\_mail:info@targetmol.com Address:34 Washington Street,Wellesley Hills,MA 02481