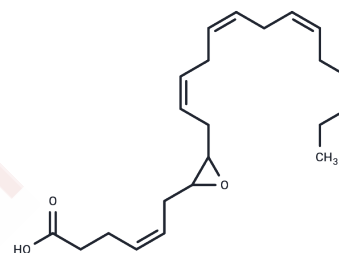


$(\pm)7(8)$ -EpDPA

## Chemical Properties

CAS No. : 895127-66-9  
 Formula: C<sub>22</sub>H<sub>32</sub>O<sub>3</sub>  
 Molecular Weight: 344.495  
 Storage: Powder: -20°C for 3 years | In solvent: -80°C for 1 year  
 Actual storage temperature shall be subject to the COA.



## Biological Description

Description	Docosahexaenoic acid is the most abundant $\omega$ -3 fatty acid in neural tissues, especially in the brain and retina. $(\pm)7(8)$ -EpDPA is an epoxide derivative of DHA that is generated by the action of cytochrome P450 epoxigenases. It is naturally occurring in plasma and brain and spinal cord tissues and is increased following dietary supplementation with $\omega$ -3 fatty acids. $(\pm)7(8)$ -EpDPA and other epoxy metabolites of DHA modulate receptor and channel activities to evoke diverse effects, such as promoting vasodilation, inhibiting angiogenesis, and decreasing inflammatory and neuropathic pain. $(\pm)7(8)$ -EpDPA is a substrate of soluble epoxide hydrolase (KM = 15 $\mu$ M), which converts it to the corresponding diol.
Targets(IC50)	Others,Endogenous Metabolite

## Solubility Information

Solubility	PBS (pH 7.2): 1 mg/mL (2.9 mM),Sonication is recommended. DMSO: 50 mg/mL (145.14 mM),Sonication is recommended. Ethanol: 50 mg/mL (145.14 mM),Sonication is recommended. DMF: 50 mg/mL (145.14 mM),Sonication is recommended. (< 1 mg/ml refers to the product slightly soluble or insoluble)
------------	---

### Preparing Stock Solutions

---

	<b>1mg</b>	<b>5mg</b>	<b>10mg</b>
1 mM	2.9028 mL	14.5138 mL	29.0276 mL
5 mM	0.5806 mL	2.9028 mL	5.8055 mL
10 mM	0.2903 mL	1.4514 mL	2.9028 mL
50 mM	0.0581 mL	0.2903 mL	0.5806 mL

---

Please select the appropriate solvent to prepare the stock solution, according to the solubility of the product in different solvents. Please use it as soon as possible.

Note: The dilution table applies only to solid products. For liquid products, please calculate the stock solution based on the stated concentration and/or density.

**Inhibitor · Natural Compounds · Compound Libraries · Recombinant Proteins**

This product is for Research Use Only · Not for Human or Veterinary or Therapeutic Use

Tel:781-999-4286 E\_mail:info@targetmol.com Address:34 Washington Street,Wellesley Hills,MA 02481