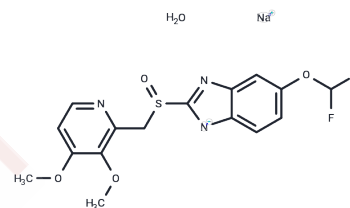


Pantoprazole Sodium Hydrate

Chemical Properties

CAS No. : 164579-32-2
 Formula: C₁₆H₁₄F₂N₃NaO₄S·3/2H₂O
 Molecular Weight: 432.37
 Storage: Powder: -20°C for 3 years | In solvent: -80°C for 1 year
 Actual storage temperature shall be subject to the COA.



Biological Description

Description	Pantoprazole Sodium Hydrate (BY1023 (sodium hydrate)) is a proton pump inhibitor drug, used for short-term treatment of erosion and ulceration of the esophagus caused by gastroesophageal reflux disease.
Targets(IC50)	Apoptosis,Proton pump,Antibacterial,Autophagy,Potassium Channel

Solubility Information

Solubility	DMSO: 4.37 mg/mL (10.11 mM),Sonication is recommended. (< 1 mg/ml refers to the product slightly soluble or insoluble)
In vivo Formulation	10% DMSO+40% PEG300+5% Tween 80+45% Saline: 1 mg/mL (2.31 mM),Sonication is recommended. <i>Please add the solvents sequentially, clarifying the solution as much as possible before adding the next one. Dissolve by heating and/or sonication if necessary. Working solution is recommended to be prepared and used immediately. The formulation provided above is for reference purposes only. In vivo formulations may vary and should be modified based on specific experimental conditions.</i>

Preparing Stock Solutions

	1mg	5mg	10mg
1 mM	2.3128 mL	11.5642 mL	23.1283 mL
5 mM	0.4626 mL	2.3128 mL	4.6257 mL
10 mM	0.2313 mL	1.1564 mL	2.3128 mL
50 mM	0.0463 mL	0.2313 mL	0.4626 mL

Please select the appropriate solvent to prepare the stock solution, according to the solubility of the product in different solvents. Please use it as soon as possible.

Note: The dilution table applies only to solid products. For liquid products, please calculate the stock solution based on the stated concentration and/or density.

Reference

Cheer SM, et al. Drugs. 2003; 63(1):101-33.

Inhibitor · Natural Compounds · Compound Libraries · Recombinant Proteins

This product is for Research Use Only · Not for Human or Veterinary or Therapeutic Use

Tel:781-999-4286 E_mail:info@targetmol.com Address:34 Washington Street,Wellesley Hills,MA 02481