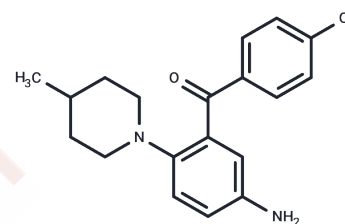


Imupedone

Chemical Properties

CAS No. :	86187-86-2
Formula:	C ₁₉ H ₂₁ ClN ₂ O
Molecular Weight:	328.84
Storage:	Powder: -20°C for 3 years In solvent: -80°C for 1 year Actual storage temperature shall be subject to the COA.



Biological Description

Description	Imupedone (LF 1695) is a synthetic immunomodulator that modulates T lymphocytes and macrophages, induces T-cell differentiation of bone marrow precursor cells, and increases the proliferative response of lymphocytes to mitogens, antigens, and allogeneic cells.13483-84-5
Targets(IC50)	Others,Interleukin

Preparing Stock Solutions

	1mg	5mg	10mg
1 mM	3.041 mL	15.205 mL	30.4099 mL
5 mM	0.6082 mL	3.041 mL	6.082 mL
10 mM	0.3041 mL	1.5205 mL	3.041 mL
50 mM	0.0608 mL	0.3041 mL	0.6082 mL

Please select the appropriate solvent to prepare the stock solution, according to the solubility of the product in different solvents. Please use it as soon as possible.

Note: The dilution table applies only to solid products. For liquid products, please calculate the stock solution based on the stated concentration and/or density.

Reference

- Touraine JL. Effect of the immunomodulator LF 1695 on T-lymphocytes and macrophages. Activity in HIV infection. *Med Oncol Tumor Pharmacother.* 1989;6(1):59-61.
- Thorel T,et al. In vitro and in vivo immunomodulation by LF 1695 of human and rat macrophages and platelets in schistosomiasis. *Int J Immunopharmacol.* 1988;10(6):739-46.
- Hullin F,et al. Stimulation of 12-HETE production in human platelets by an immunomodulator, LF 1695. Evidence for activation of arachidonate liberation coupled to cyclo-oxygenase inhibition. *Biochem Pharmacol.* 1989 Sep 1; 38(17):2763-72.
- Pascal M,et al. Increased interleukin-1 and modulation of interleukin-2 production by murine macrophages and lymphocytes treated with LF 1695. *Int J Immunopharmacol.* 1986;8(5):499-508.

Inhibitor · Natural Compounds · Compound Libraries · Recombinant Proteins

This product is for Research Use Only · Not for Human or Veterinary or Therapeutic Use

Tel:781-999-4286 E_mail:info@targetmol.com Address:34 Washington Street,Wellesley Hills,MA 02481