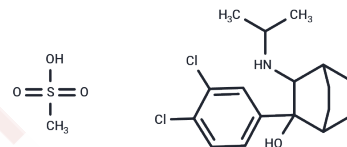


Cilobamine mesylate

Chemical Properties

CAS No. :	69429-85-2
Formula:	C ₁₈ H ₂₇ Cl ₂ N ₂ O ₄ S
Molecular Weight:	424.38
Storage:	Powder: -20°C for 3 years In solvent: -80°C for 1 year Actual storage temperature shall be subject to the COA.



Biological Description

Description	Cilobamine mesylate is a drug which acts as a norepinephrine-dopamine reuptake inhibitor (NDRI) and has stimulant and antidepressant effects.
Targets(IC50)	Others

Preparing Stock Solutions

	1mg	5mg	10mg
1 mM	2.3564 mL	11.7819 mL	23.5638 mL
5 mM	0.4713 mL	2.3564 mL	4.7128 mL
10 mM	0.2356 mL	1.1782 mL	2.3564 mL
50 mM	0.0471 mL	0.2356 mL	0.4713 mL

Please select the appropriate solvent to prepare the stock solution, according to the solubility of the product in different solvents. Please use it as soon as possible.

Note: The dilution table applies only to solid products. For liquid products, please calculate the stock solution based on the stated concentration and/or density.

Inhibitor · Natural Compounds · Compound Libraries · Recombinant Proteins

This product is for Research Use Only · Not for Human or Veterinary or Therapeutic Use

Tel:781-999-4286 E_mail:info@targetmol.com Address:34 Washington Street,Wellesley Hills,MA 02481