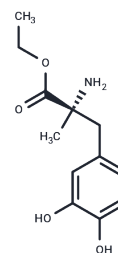


## Methyldopate

## Chemical Properties

CAS No. :	6014-30-8
Formula:	C <sub>12</sub> H <sub>17</sub> NO <sub>4</sub>
Molecular Weight:	239.27
Storage:	Powder: -20°C for 3 years   In solvent: -80°C for 1 year Actual storage temperature shall be subject to the COA.



## Biological Description

Description	Methyldopate is an ethyl ester prodrug form of methyldopa, a dopamine decarboxylase inhibitor that has antihypertensive activity in vitro and in vivo. Formulations containing methyldopate have been used in the treatment of hypertension.
Targets(IC50)	Others, Adrenergic Receptor

## Solubility Information

Solubility	DMSO: Slightly soluble Methanol: Slightly soluble ( $< 1$ mg/ml refers to the product slightly soluble or insoluble)
------------	--

## Preparing Stock Solutions

	1mg	5mg	10mg
1 mM	4.1794 mL	20.8969 mL	41.7938 mL
5 mM	0.8359 mL	4.1794 mL	8.3588 mL
10 mM	0.4179 mL	2.0897 mL	4.1794 mL
50 mM	0.0836 mL	0.4179 mL	0.8359 mL

Please select the appropriate solvent to prepare the stock solution, according to the solubility of the product in different solvents. Please use it as soon as possible.

Note: The dilution table applies only to solid products. For liquid products, please calculate the stock solution based on the stated concentration and/or density.

Inhibitor · Natural Compounds · Compound Libraries · Recombinant Proteins

This product is for Research Use Only · Not for Human or Veterinary or Therapeutic Use

Tel: 781-999-4286 E\_mail: info@targetmol.com Address: 34 Washington Street, Wellesley Hills, MA 02481