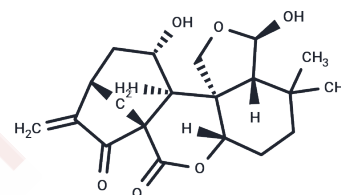


Epinodosin

Chemical Properties

CAS No. :	20086-60-6
Formula:	C ₂₀ H ₂₆ O ₆
Molecular Weight:	362.422
Storage:	Powder: -20°C for 3 years In solvent: -80°C for 1 year Actual storage temperature shall be subject to the COA.



Biological Description

Description	Epinodosin induces significant DNA damage to HepG2 cells in a time- and dose-dependent manner. Epinodosin has a biphasic, dose-dependent effect on root growth and a strong inhibitory effect on root hair development in <i>Lactuca sativa</i> L. seedlings.
Targets(IC50)	Others

Preparing Stock Solutions

	1mg	5mg	10mg
1 mM	2.7592 mL	13.7961 mL	27.5923 mL
5 mM	0.5518 mL	2.7592 mL	5.5185 mL
10 mM	0.2759 mL	1.3796 mL	2.7592 mL
50 mM	0.0552 mL	0.2759 mL	0.5518 mL

Please select the appropriate solvent to prepare the stock solution, according to the solubility of the product in different solvents. Please use it as soon as possible.

Note: The dilution table applies only to solid products. For liquid products, please calculate the stock solution based on the stated concentration and/or density.

Inhibitor · Natural Compounds · Compound Libraries · Recombinant Proteins

This product is for Research Use Only · Not for Human or Veterinary or Therapeutic Use

Tel: 781-999-4286 E_mail: info@targetmol.com Address: 34 Washington Street, Wellesley Hills, MA 02481