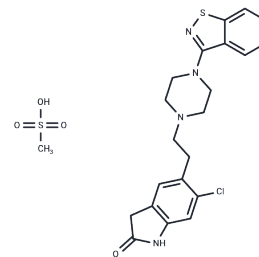


Ziprasidone mesylate

Chemical Properties

| | |
|-------------------|---|
| CAS No. : | 185021-64-1 |
| Formula: | C ₂₂ H ₂₅ ClN ₄ O ₄ S ₂ |
| Molecular Weight: | 509.04 |
| Storage: | Powder: -20°C for 3 years In solvent: -80°C for 1 year Actual storage temperature shall be subject to the COA. |



Biological Description

| | |
|----------------------------|--|
| Description | Ziprasidone (CP-88059) mesylate is an orally active 5-HT and dopamine receptor antagonist with affinity for D ₂ , 5-HT _{2A} , and 5-HT _{1A} receptors in rats, exhibiting K _i values of 4.8 nM, 0.42 nM, and 3.4 nM, respectively. |
| Targets(IC ₅₀) | Others,5-HT Receptor,Dopamine Receptor |

Preparing Stock Solutions

| | 1mg | 5mg | 10mg |
|-------|-----------|-----------|------------|
| 1 mM | 1.9645 mL | 9.8224 mL | 19.6448 mL |
| 5 mM | 0.3929 mL | 1.9645 mL | 3.929 mL |
| 10 mM | 0.1964 mL | 0.9822 mL | 1.9645 mL |
| 50 mM | 0.0393 mL | 0.1964 mL | 0.3929 mL |

Please select the appropriate solvent to prepare the stock solution, according to the solubility of the product in different solvents. Please use it as soon as possible.

Note: The dilution table applies only to solid products. For liquid products, please calculate the stock solution based on the stated concentration and/or density.

Inhibitor · Natural Compounds · Compound Libraries · Recombinant Proteins

This product is for Research Use Only · Not for Human or Veterinary or Therapeutic Use

Tel:781-999-4286 E_mail:info@targetmol.com Address:34 Washington Street,Wellesley Hills,MA 02481