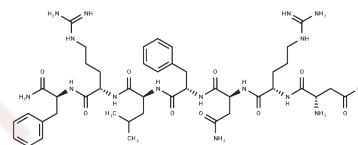


Neuropeptide DF2

Chemical Properties

CAS No. :	149471-11-4
Formula:	C44H67N15O10
Molecular Weight:	966.1
Storage:	Keep away from moisture Powder: -20°C for 3 years In solvent: -80°C for 1 year <small>Actual storage temperature shall be subject to the COA.</small>



Biological Description

Description	Neuropeptide DF2 is an FMRFamide-related neuropeptide from crayfish.
Targets(IC50)	PKC

Preparing Stock Solutions

	1mg	5mg	10mg
1 mM	1.0351 mL	5.1754 mL	10.3509 mL
5 mM	0.207 mL	1.0351 mL	2.0702 mL
10 mM	0.1035 mL	0.5175 mL	1.0351 mL
50 mM	0.0207 mL	0.1035 mL	0.207 mL

Please select the appropriate solvent to prepare the stock solution, according to the solubility of the product in different solvents. Please use it as soon as possible.

Note: The dilution table applies only to solid products. For liquid products, please calculate the stock solution based on the stated concentration and/or density.

Reference

- Weiss T, Kreissl S, Rathmayer W. Localization of a FMRFamide-related peptide in efferent neurons and analysis of neuromuscular effects of DRNFLRFamide (DF2) in the crustacean *Idotea emarginata*. *Eur J Neurosci*. 2003 Jan;17(2):239-48. PubMed PMID: 12542660.
- Friedrich RW, Quigley PA, Srivastava M, Skerrett M, Mercier AJ. Temperature dependence of synaptic modulation by a FMRFamide-related neuropeptide in crayfish. *Neurosci Lett*. 1994 Mar 14;169(1-2):56-8. PubMed PMID: 7914017.
- Noronha KF, Mercier AJ. A role for calcium/calmodulin-dependent protein kinase in mediating synaptic modulation by a neuropeptide. *Brain Res*. 1995 Feb 27;673(1):70-4. PubMed PMID: 7757481.
- Dunn TW, Mercier AJ. Synaptic modulation by a neuropeptide depends on temperature and extracellular calcium. *J Neurophysiol*. 2003 Apr;89(4):1807-14. PubMed PMID: 12686567.

Inhibitor · Natural Compounds · Compound Libraries · Recombinant Proteins

This product is for Research Use Only · Not for Human or Veterinary or Therapeutic Use

Tel:781-999-4286 E_mail:info@targetmol.com Address:34 Washington Street,Wellesley Hills,MA 02481