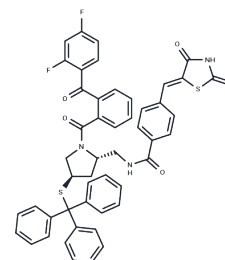


Pyrrophenone

Chemical Properties

CAS No. :	341973-06-6
Formula:	C49H37F2N3O5S2
Molecular Weight:	849.97
Storage:	Powder: -20°C for 3 years In solvent: -80°C for 1 year Actual storage temperature shall be subject to the COA.



Biological Description

Description	The group IVA phospholipase A2 (PLA2), known as calcium-dependent cytosolic PLA2 (cPLA2), selectively releases arachidonic acid (AA) from membrane phospholipids, playing a central role in initiating the synthesis of prostaglandins (PGs) and leukotrienes (LTs). Pyrrophenone inhibits cPLA2 α with an IC50 of 4.2 nM in enzyme assays and potently blocks the release of AA and the production of PGE2 and LTC4 in cells (IC50 = 24, 25, and 14 nM, respectively). Its action is reversible and selective, as pyrrophenone inhibits the secretory type IB and IIA PLA2s with more than a hundred-fold less potency. Pyrrophenone has also been shown to inhibit calcium ionophore (A23187)-stimulated AA release from monocytic cells, interleukin-1-induced PGE2 synthesis in mesangial cells, and the production of PGE2, LTs, and platelet-activating factor by human neutrophils, always with maximal inhibition at concentrations below 1 μ M.
Targets(IC50)	Others,Phospholipase

Solubility Information

Solubility	DMSO:PBS (pH 7.2) (1:10): 0.1 mg/mL (0.12 mM),Sonication is recommended. DMSO: 15 mg/mL (17.65 mM),Sonication is recommended. DMF: 12.5 mg/mL (14.71 mM),Sonication is recommended. (< 1 mg/ml refers to the product slightly soluble or insoluble)
------------	--

Preparing Stock Solutions

	1mg	5mg	10mg
1 mM	1.1765 mL	5.8826 mL	11.7651 mL
5 mM	0.2353 mL	1.1765 mL	2.353 mL
10 mM	0.1177 mL	0.5883 mL	1.1765 mL
50 mM	0.0235 mL	0.1177 mL	0.2353 mL

Please select the appropriate solvent to prepare the stock solution, according to the solubility of the product in different solvents. Please use it as soon as possible.

Note: The dilution table applies only to solid products. For liquid products, please calculate the stock solution based on the stated concentration and/or density.

Inhibitor · Natural Compounds · Compound Libraries · Recombinant Proteins

This product is for Research Use Only · Not for Human or Veterinary or Therapeutic Use

Tel:781-999-4286 E_mail:info@targetmol.com Address:34 Washington Street,Wellesley Hills,MA 02481