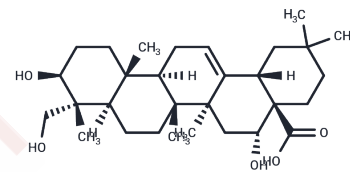


Caulophyllogenin

Chemical Properties

CAS No. :	52936-64-8
Formula:	C ₃₀ H ₄₈ O ₅
Molecular Weight:	488.7
Storage:	Store at low temperature Powder: -20°C for 3 years In solvent: -80°C for 1 year <small>Actual storage temperature shall be subject to the COA.</small>



Biological Description

Description	Caulophyllogenin is a partial PPAR γ agonist (EC ₅₀ =12.6 μ M) derived from the stem bark of <i>Kalopanax pictus</i> (Araliaceae). Caulophyllogenin inhibits pro-inflammatory cytokine secretion and can be used in studies about the prevention and treatment of inflammatory diseases, type-2 diabetes, obesity and metabolic syndrome.
Targets(IC50)	IL Receptor, Immunology/Inflammation related, PPAR, TNF
In vitro	Caulophyllogenin inhibits IL-12 p40, IL-6, and TNF- α with IC ₅₀ s ranging from 3.3 to 20.0 μ M[1].

Solubility Information

Solubility	H ₂ O: < 1 mg/mL (insoluble or slightly soluble) DMSO: 100 mg/mL (204.62 mM) (< 1 mg/ml refers to the product slightly soluble or insoluble)
------------	---

Preparing Stock Solutions

	1mg	5mg	10mg
1 mM	2.0462 mL	10.2312 mL	20.4625 mL
5 mM	0.4092 mL	2.0462 mL	4.0925 mL
10 mM	0.2046 mL	1.0231 mL	2.0462 mL
50 mM	0.0409 mL	0.2046 mL	0.4092 mL

Please select the appropriate solvent to prepare the stock solution, according to the solubility of the product in different solvents. Please use it as soon as possible.

Note: The dilution table applies only to solid products. For liquid products, please calculate the stock solution based on the stated concentration and/or density.

Reference

Quang TH, et al. Inhibitory effects of oleanane-type triterpenes and saponins from the stem bark of *Kalopanax pictus* on LPS-stimulated pro-inflammatory cytokine production in bone marrow-derived dendritic cells. *Arch Pharm Res.* 2013 Mar;36(3):327-34.

Montanari R, et, al. Screening of saponins and sapogenins from *Medicago* species as potential PPAR γ agonists and X-ray structure of the complex PPAR γ /caulophyllogenin. *Sci Rep.* 2016 Jun 10; 6:27658.

Zhang Y, et, al. Studies on cytotoxic triterpene saponins from the leaves of *Aralia elata*. *Food Chem.* 2013 May 1; 138(1):208-13.

Inhibitor · Natural Compounds · Compound Libraries · Recombinant Proteins

This product is for Research Use Only · Not for Human or Veterinary or Therapeutic Use

Tel:781-999-4286 E_mail:info@targetmol.com Address:34 Washington Street,Wellesley Hills,MA 02481