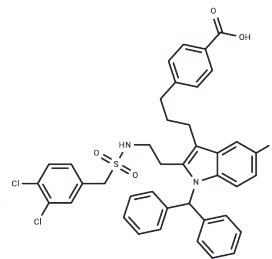


## Efipladib

## Chemical Properties

CAS No. : 381683-94-9  
 Formula: C<sub>40</sub>H<sub>35</sub>Cl<sub>3</sub>N<sub>2</sub>O<sub>4</sub>S  
 Molecular Weight: 746.14  
 Storage: Powder: -20°C for 3 years | In solvent: -80°C for 1 year  
 Actual storage temperature shall be subject to the COA.



## Biological Description

Description	Efipladib is a phospholipase inhibitor. Efipladib decreases nociceptive responses without affecting PGE <sub>2</sub> levels in the cerebral spinal fluid.
Targets(IC <sub>50</sub> )	Others,Phospholipase

## Preparing Stock Solutions

	1mg	5mg	10mg
1 mM	1.3402 mL	6.7012 mL	13.4023 mL
5 mM	0.268 mL	1.3402 mL	2.6805 mL
10 mM	0.134 mL	0.6701 mL	1.3402 mL
50 mM	0.0268 mL	0.134 mL	0.268 mL

Please select the appropriate solvent to prepare the stock solution, according to the solubility of the product in different solvents. Please use it as soon as possible.

Note: The dilution table applies only to solid products. For liquid products, please calculate the stock solution based on the stated concentration and/or density.

### Reference

Nickerson-Nutter CL, Goodwin D, Shen MW, Damphousse C, Duan W, Samad TA, McKew JC, Lee KL, Zaleska MM, Mollova N, Clark JD. The cPLA2 $\alpha$  inhibitor efipladib decreases nociceptive responses without affecting PGE2 levels in the cerebral spinal fluid. *Neuropharmacology*. 2011 Mar;60(4):633-41. doi: 10.1016/j.neuropharm.2010.11.025. PubMed PMID: 21146550.

McKew JC, Lee KL, Shen MW, et al. Indole cytosolic phospholipase A2 alpha inhibitors: discovery and in vitro and in vivo characterization of 4-{3-[5-chloro-2-(2-[(3,4-dichlorobenzyl)sulfonyl]amino)ethyl]-1-(diphenylmethyl)-1H-indol-3-yl]propyl}benzoic acid, efipladib. *J Med Chem*. 2008 Jun 26;51(12):3388-413. doi: 10.1021/jm701467e. PubMed PMID: 18498150.

Yao M, Xie C, Kiang MY, Teng Y, Harman D, Tiffen J, Wang Q, Sved P, Bao S, Witting P, Holst J, Dong Q. Targeting of cytosolic phospholipase A2 $\alpha$  impedes cell cycle re-entry of quiescent prostate cancer cells. *Oncotarget*. 2015 Oct 27;6(33):34458-74. doi: 10.18632/oncotarget.5277. PubMed PMID: 26416244; PubMed Central PMCID: PMC4741466.

Niknami M, Vignarajan S, Yao M, Hua S, Witting PK, Kita Y, Shimizu T, Sved P, Patel MI, Dong Q. Decrease in expression or activity of cytosolic phospholipase A2alpha increases cyclooxygenase-1 action: A cross-talk between key enzymes in arachidonic acid pathway in prostate cancer cells. *Biochim Biophys Acta*. 2010 Jul;1801(7):731-7. doi: 10.1016/j.bbali.2010.03.003. PubMed PMID: 20227521.

**Inhibitor · Natural Compounds · Compound Libraries · Recombinant Proteins**

This product is for Research Use Only · Not for Human or Veterinary or Therapeutic Use

Tel: 781-999-4286 E\_mail: info@targetmol.com Address: 34 Washington Street, Wellesley Hills, MA 02481