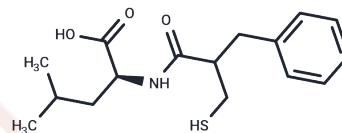


Leucine thiorphan

Chemical Properties

CAS No. :	80970-04-3
Formula:	C ₁₆ H ₂₃ NO ₃ S
Molecular Weight:	309.42
Storage:	Powder: -20°C for 3 years In solvent: -80°C for 1 year Actual storage temperature shall be subject to the COA.



Biological Description

Description	Leucine thiorphan is an inhibitor of enkephalinase.
Targets(IC50)	Others

Preparing Stock Solutions

	1mg	5mg	10mg
1 mM	3.2319 mL	16.1593 mL	32.3185 mL
5 mM	0.6464 mL	3.2319 mL	6.4637 mL
10 mM	0.3232 mL	1.6159 mL	3.2319 mL
50 mM	0.0646 mL	0.3232 mL	0.6464 mL

Please select the appropriate solvent to prepare the stock solution, according to the solubility of the product in different solvents. Please use it as soon as possible.

Note: The dilution table applies only to solid products. For liquid products, please calculate the stock solution based on the stated concentration and/or density.

Reference

Di Maria GU, Katayama M, Borson DB, Nadel JA. Neutral endopeptidase modulates endothelin-1-induced airway smooth muscle contraction in guinea-pig trachea. Regul Pept. 1992 Jun 11;39(2-3):137-45. PubMed PMID: 1438968.

Kohrogi H, Nadel JA, Malfroy B, Gorman C, Bridenbaugh R, Patton JS, Borson DB. Recombinant human enkephalinase (neutral endopeptidase) prevents cough induced by tachykinins in awake guinea pigs. J Clin Invest. 1989 Sep;84(3):781-6. PubMed PMID: 2474575; PubMed Central PMCID: PMC329719.

Djokic TD, Nadel JA, Dusser DJ, Sekizawa K, Graf PD, Borson DB. Inhibitors of neutral endopeptidase potentiate electrically and capsaicin-induced noncholinergic contraction in guinea pig bronchi. J Pharmacol Exp Ther. 1989 Jan;248(1):7-11. PubMed PMID: 2464061.

Djokic TD, Sekizawa K, Borson DB, Nadel JA. Neutral endopeptidase inhibitors potentiate substance P-induced contraction in gut smooth muscle. Am J Physiol. 1989 Jan;256(1 Pt 1):G39-43. PubMed PMID: 2463769.

Inhibitor · Natural Compounds · Compound Libraries · Recombinant Proteins

This product is for Research Use Only · Not for Human or Veterinary or Therapeutic Use

Tel:781-999-4286 E_mail:info@targetmol.com Address:34 Washington Street,Wellesley Hills,MA 02481