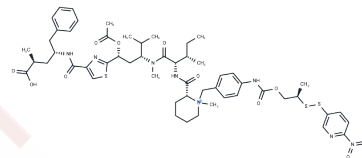


Nitro-PDS-Tubulysin M

Chemical Properties

CAS No. :	1941168-69-9
Formula:	C54H73N8O11S3
Molecular Weight:	1106.4
Storage:	Keep away from direct sunlight Powder: -20°C for 3 years In solvent: -80°C for 1 year <small>Actual storage temperature shall be subject to the COA.</small>



Biological Description

Description	Nitro-PDS-Tubulysin M, an ADC (Antibody-Drug Conjugate) drug-linker conjugate, exhibits potent antitumor activity. It employs Tubulysin M, a tubulin polymerization inhibitor, connected through the Nitro-PDS ADC linker.
Targets(IC50)	Microtubule Associated, Drug-Linker Conjugates for ADC, PROTAC Linker
In vitro	The chemical compound ADC2-2 (anti-CD22 10F4v3 LC K149C Nitro-PDS-Tubulysin M) exhibits specific cytotoxicity against WSU-DLCL2 human diffuse large B-cell lymphoma tumors, achieving a half-maximal inhibitory concentration (IC50) of 0.147 nM. Similarly, ADC2-1 (anti-Napi2b 10H1.11.4B LC K149C Nitro-PDS-Tubulysin M) demonstrates targeted toxicity in human ovarian cancer cell lines IGROV-1 and OVCAR-3x2.1, with IC50 values of 2.07 nM and 1.004 nM, respectively[1].

Preparing Stock Solutions

	1mg	5mg	10mg
1 mM	0.9038 mL	4.5192 mL	9.0383 mL
5 mM	0.1808 mL	0.9038 mL	1.8077 mL
10 mM	0.0904 mL	0.4519 mL	0.9038 mL
50 mM	0.0181 mL	0.0904 mL	0.1808 mL

Please select the appropriate solvent to prepare the stock solution, according to the solubility of the product in different solvents. Please use it as soon as possible.

Note: The dilution table applies only to solid products. For liquid products, please calculate the stock solution based on the stated concentration and/or density.

Reference

FLYGARE, John A, et al. Quaternary amine compounds and antibody-drug conjugates thereof. WO2016090050A1.
Staben LR, et al. Targeted drug delivery through the traceless release of tertiary and heteroaryl amines from antibody-drug conjugates. Nat Chem. 2016 Dec;8(12):1112-1119.

Inhibitor · Natural Compounds · Compound Libraries · Recombinant Proteins

This product is for Research Use Only · Not for Human or Veterinary or Therapeutic Use

Tel:781-999-4286 E_mail:info@targetmol.com Address:34 Washington Street,Wellesley Hills,MA 02481