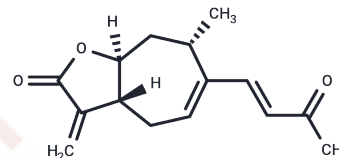


## Xanthatin

### Chemical Properties

CAS No. :	26791-73-1
Formula:	C <sub>15</sub> H <sub>18</sub> O <sub>3</sub>
Molecular Weight:	246.3
Storage:	Powder: -20°C for 3 years   In solvent: -80°C for 1 year <small>Actual storage temperature shall be subject to the COA.</small>



### Biological Description

Description	1. Xanthatin has cytotoxic activity. 2. Xanthatin has antibacterial and antifungal activities against MRSA. 3. Xanthatin may have therapeutic potential against NSCLC. 4. Xanthatin can inhibit murine melanoma B16-F1 cell proliferation possibly associated with activation of Wnt/ $\beta$ -catenin pathway and its activity against melanoma tumor might also be relevant to inhibition of angiogenesis.
Targets(IC50)	Apoptosis, Antibacterial, Lipoxygenase, VEGFR, Wnt/ $\beta$ -catenin

### Solubility Information

Solubility	DMSO: 65 mg/mL (263.91 mM), Sonication is recommended. Chloroform, Dichloromethane, Ethyl Acetate, Acetone, etc.: Soluble, ( $< 1$ mg/ml refers to the product slightly soluble or insoluble)
------------	---

### Preparing Stock Solutions

	1mg	5mg	10mg
1 mM	4.0601 mL	20.3004 mL	40.6009 mL
5 mM	0.812 mL	4.0601 mL	8.1202 mL
10 mM	0.406 mL	2.030 mL	4.0601 mL
50 mM	0.0812 mL	0.406 mL	0.812 mL

Please select the appropriate solvent to prepare the stock solution, according to the solubility of the product in different solvents. Please use it as soon as possible.

Note: The dilution table applies only to solid products. For liquid products, please calculate the stock solution based on the stated concentration and/or density.

### Reference

Ginesta-Peris E , Garcia-Breijo F J , E. Primo-Yúfera. Antimicrobial activity of xanthatin from Xanthium spinosum L. [J]. Letters in Applied Microbiology, 2010, 18(4):206-208.

**Inhibitor · Natural Compounds · Compound Libraries · Recombinant Proteins**

This product is for Research Use Only · Not for Human or Veterinary or Therapeutic Use

Tel:781-999-4286 E\_mail:info@targetmol.com Address:34 Washington Street,Wellesley Hills,MA 02481