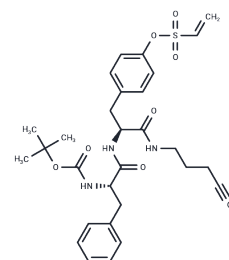


PDI-IN-P1

Chemical Properties

CAS No. : 1461648-55-4
 Formula: C30H37N3O7S
 Molecular Weight: 583.7
 Storage: Powder: -20°C for 3 years | In solvent: -80°C for 1 year
 Actual storage temperature shall be subject to the COA.



Biological Description

Description	PDI-IN-P1 is an inhibitor of protein disulfide isomerase.
Targets(IC50)	Others

Preparing Stock Solutions

	1mg	5mg	10mg
1 mM	1.7132 mL	8.566 mL	17.1321 mL
5 mM	0.3426 mL	1.7132 mL	3.4264 mL
10 mM	0.1713 mL	0.8566 mL	1.7132 mL
50 mM	0.0343 mL	0.1713 mL	0.3426 mL

Please select the appropriate solvent to prepare the stock solution, according to the solubility of the product in different solvents. Please use it as soon as possible.

Note: The dilution table applies only to solid products. For liquid products, please calculate the stock solution based on the stated concentration and/or density.

Reference

Ge J, Zhang CJ, Li L, Chong LM, Wu X, Hao P, Sze SK, Yao SQ. Small molecule probe suitable for in situ profiling and inhibition of protein disulfide isomerase. ACS Chem Biol. 2013 Nov 15;8(11):2577-85. doi: 10.1021/cb4002602. Epub 2013 Sep 26. PubMed PMID: 24070012.

Inhibitor · Natural Compounds · Compound Libraries · Recombinant Proteins

This product is for Research Use Only. Not for Human or Veterinary or Therapeutic Use

Tel:781-999-4286 E_mail:info@targetmol.com Address:34 Washington Street,Wellesley Hills,MA 02481