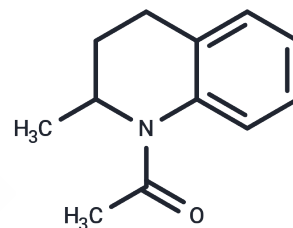


MS2126

Chemical Properties

CAS No. : 16078-42-5
 Formula: C₁₂H₁₅NO
 Molecular Weight: 189.25
 Storage: Powder: -20°C for 3 years | In solvent: -80°C for 1 year
 Actual storage temperature shall be subject to the COA.



Biological Description

Description	MS2126 is a Human p53 and CREB Binding Protein interaction inhibitor.
Targets(IC50)	Others

Preparing Stock Solutions

	1mg	5mg	10mg
1 mM	5.284 mL	26.4201 mL	52.8402 mL
5 mM	1.0568 mL	5.284 mL	10.568 mL
10 mM	0.5284 mL	2.642 mL	5.284 mL
50 mM	0.1057 mL	0.5284 mL	1.0568 mL

Please select the appropriate solvent to prepare the stock solution, according to the solubility of the product in different solvents. Please use it as soon as possible.

Note: The dilution table applies only to solid products. For liquid products, please calculate the stock solution based on the stated concentration and/or density.

Reference

Nicolai N, Cook JL, Smeins FE. Grassland composition affects season shifts in seed preference by Pogonomyrmex barbatus (Hymenoptera: Myrmicinae) in the Edwards Plateau, Texas. Environ Entomol. 2007 Apr;36(2):433-40. PubMed PMID: 17445379.

Inhibitor · Natural Compounds · Compound Libraries · Recombinant Proteins

This product is for Research Use Only · Not for Human or Veterinary or Therapeutic Use

Tel: 781-999-4286 E_mail: info@targetmol.com Address: 34 Washington Street, Wellesley Hills, MA 02481