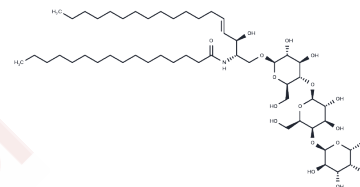


C16 Globotriaosylceramide (d18:1/16:0)

Chemical Properties

CAS No. :	137896-85-6
Formula:	C52H97NO18
Molecular Weight:	1024.337
Storage:	Powder: -20°C for 3 years In solvent: -80°C for 1 year Actual storage temperature shall be subject to the COA.



Biological Description

Description	C16 globotriaosylceramide is an endogenous sphingolipid found in mammalian cell membranes that is synthesized from C16 lactosylceramide. C16 globotriaosylceramide acts as a receptor for Shiga toxin in B cell-derived Raji cells and THP-1 monocytes. It accumulates in endothelial cells, pericytes, vascular smooth muscle cells, renal epithelial cells, dorsal ganglia neuronal cells, and myocardial cells in patients with Fabry disease. C16 globotriaosylceramide is also upregulated in plasma of patients with ovarian carcinoma compared to those with benign ovarian tumors or uterine fibroids.
Targets(IC50)	Others

Solubility Information

Solubility	DMSO: Soluble Chloroform:Methanol (2:1): Soluble (< 1 mg/ml refers to the product slightly soluble or insoluble)
------------	---

Preparing Stock Solutions

	1mg	5mg	10mg
1 mM	0.9762 mL	4.8812 mL	9.7624 mL
5 mM	0.1952 mL	0.9762 mL	1.9525 mL
10 mM	0.0976 mL	0.4881 mL	0.9762 mL
50 mM	0.0195 mL	0.0976 mL	0.1952 mL

Please select the appropriate solvent to prepare the stock solution, according to the solubility of the product in different solvents. Please use it as soon as possible.

Note: The dilution table applies only to solid products. For liquid products, please calculate the stock solution based on the stated concentration and/or density.

Inhibitor · Natural Compounds · Compound Libraries · Recombinant Proteins

This product is for Research Use Only · Not for Human or Veterinary or Therapeutic Use

Tel:781-999-4286 E_mail:info@targetmol.com Address:34 Washington Street,Wellesley Hills,MA 02481