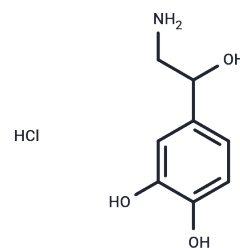


DL-Norepinephrine hydrochloride

Chemical Properties

CAS No. :	55-27-6
Formula:	C ₈ H ₁₂ ClNO ₃
Molecular Weight:	205.64
Storage:	Keep away from moisture Powder: -20°C for 3 years In solvent: -80°C for 1 year <i>Actual storage temperature shall be subject to the COA.</i>



Biological Description

Description	DL-Norepinephrine hydrochloride (DL-lysine) is a high-affinity basic amino acid substrate of amino acid transporter b0 + with a Km value in the range of 100-400 μM.
Targets(IC50)	Adrenergic Receptor

Solubility Information

Solubility	DMSO: 240.00 mg/mL (1167.09 mM), Sonication is recommended. (< 1 mg/ml refers to the product slightly soluble or insoluble)
In vivo Formulation	10% DMSO+40% PEG300+5% Tween-80+45% Saline: 1 mg/mL (4.86 mM), Sonication is recommended. <i>Please add the solvents sequentially, clarifying the solution as much as possible before adding the next one. Dissolve by heating and/or sonication if necessary. Working solution is recommended to be prepared and used immediately. The formulation provided above is for reference purposes only. In vivo formulations may vary and should be modified based on specific experimental conditions.</i>

Preparing Stock Solutions

	1mg	5mg	10mg
1 mM	4.8629 mL	24.3143 mL	48.6287 mL
5 mM	0.9726 mL	4.8629 mL	9.7257 mL
10 mM	0.4863 mL	2.4314 mL	4.8629 mL
50 mM	0.0973 mL	0.4863 mL	0.9726 mL

Please select the appropriate solvent to prepare the stock solution, according to the solubility of the product in different solvents. Please use it as soon as possible.

Note: The dilution table applies only to solid products. For liquid products, please calculate the stock solution based on the stated concentration and/or density.

Reference

Matsuda H, et al. Effects of nitroglycerin, adenosine, noradrenaline, and isoproterenol on the myocardial oxygen tension. Jpn Heart J. 1979 Nov;20(6):867-79.

Inhibitor · Natural Compounds · Compound Libraries · Recombinant Proteins

This product is for Research Use Only · Not for Human or Veterinary or Therapeutic Use

Tel:781-999-4286 E_mail:info@targetmol.com Address:34 Washington Street,Wellesley Hills,MA 02481