

SKLB 610

## Chemical Properties

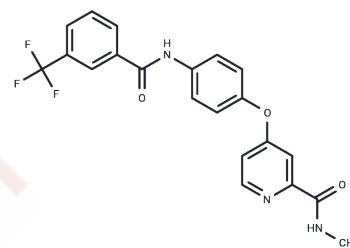
CAS No. : 1125780-41-7

Formula: C<sub>21</sub>H<sub>16</sub>F<sub>3</sub>N<sub>3</sub>O<sub>3</sub>

Molecular Weight: 415.37

Storage: Powder: -20°C for 3 years | In solvent: -80°C for 1 year

Actual storage temperature shall be subject to the COA.



## Biological Description

Description	SKLB610, a novel multi-targeted inhibitor, inhibits angiogenesis-related tyrosine kinase VEGFR2, FGFR2, and PDGFR at a rate of 97%, 65%, and 55%, respectively, at the concentration of 10 $\mu$ M in biochemical kinase assays.
Targets(IC50)	FGFR,PDGFR,VEGFR
Kinase Assay	PI3K assay: PI3K assay is preformed on whole-cell lysates from CLL or normal B cells. A PI3K ELISA assay is performed. Briefly, whole-cell extracts are added to a mixture of PI (4,5)P2 substrate and reaction buffer containing adenosine triphosphate (ATP) and allowed to incubate at room temperature. The reaction is stopped by adding PI(3,4,5)P3 detector mixed with EDTA (ethylenediaminetetraacetic acid) and allowed to incubate at room temperature for 1 hour. After this time, the mixture is transferred from each well to a PI3K ELISA plate and allowed to incubate 1 hour. Plates are washed and then incubated with secondary detector for 30 minutes. Plates are washed again, and 3,3', 5,5'-tetramethylbenzidine solution is added for 5 minutes at which time H <sub>2</sub> SO <sub>4</sub> is added to stop all reactions. Plates are read at 450 nm on a Labsystems 96-well plate reader.

## Solubility Information

Solubility	DMSO: 50 mg/mL (120.37 mM),Sonication is recommended. (< 1 mg/ml refers to the product slightly soluble or insoluble)
------------	--

### Preparing Stock Solutions

---

	<b>1mg</b>	<b>5mg</b>	<b>10mg</b>
1 mM	2.4075 mL	12.0375 mL	24.0749 mL
5 mM	0.4815 mL	2.4075 mL	4.815 mL
10 mM	0.2407 mL	1.2037 mL	2.4075 mL
50 mM	0.0481 mL	0.2407 mL	0.4815 mL

---

Please select the appropriate solvent to prepare the stock solution, according to the solubility of the product in different solvents. Please use it as soon as possible.

Note: The dilution table applies only to solid products. For liquid products, please calculate the stock solution based on the stated concentration and/or density.

#### Reference

Shah A, Mangaonkar A. Ann PharmacOthers. 2015 Jul 16.

**Inhibitor · Natural Compounds · Compound Libraries · Recombinant Proteins**

This product is for Research Use Only · Not for Human or Veterinary or Therapeutic Use

Tel:781-999-4286 E\_mail:info@targetmol.com Address:34 Washington Street,Wellesley Hills,MA 02481