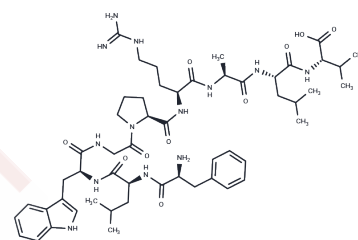


## MAGE-3 (271-279)

## Chemical Properties

CAS No. :	160295-81-8
Formula:	C53H79N13O10
Molecular Weight:	1058.296
Storage:	Keep away from moisture Powder: -20°C for 3 years   In solvent: -80°C for 1 year <small>Actual storage temperature shall be subject to the COA.</small>



## Biological Description

Description	MAGE-3 (271-279) is a peptide consisting of 271-279 amino acid residues derived from melanoma antigens encoded by the MAGE-3 gene. It is specifically recognized by cytolytic T lymphocytes (CTLs) and binds to the human leukocyte antigen (HLA)-A2 molecule. MAGE-3 is highly expressed in various human tumor types, such as malignant melanoma, but not in normal tissues, except for the testis and placenta.
-------------	--

## Preparing Stock Solutions

	1mg	5mg	10mg
1 mM	0.9449 mL	4.7246 mL	9.4491 mL
5 mM	0.189 mL	0.9449 mL	1.8898 mL
10 mM	0.0945 mL	0.4725 mL	0.9449 mL
50 mM	0.0189 mL	0.0945 mL	0.189 mL

Please select the appropriate solvent to prepare the stock solution, according to the solubility of the product in different solvents. Please use it as soon as possible.

Note: The dilution table applies only to solid products. For liquid products, please calculate the stock solution based on the stated concentration and/or density.

## Reference

J Herman, et al. A peptide encoded by the human MAGE3 gene and presented by HLA-B44 induces cytolytic T lymphocytes that recognize tumor cells expressing MAGE3. Immunogenetics. 1996;43(6):377-83.

Inhibitor · Natural Compounds · Compound Libraries · Recombinant Proteins

This product is for Research Use Only · Not for Human or Veterinary or Therapeutic Use

Tel:781-999-4286 E\_mail:info@targetmol.com Address:34 Washington Street,Wellesley Hills,MA 02481