

γ -Glu-Phe TFA(7432-24-8 free base)

Chemical Properties

CAS No. :

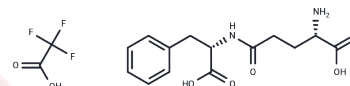
Formula: C₁₆H₁₉F₃N₂O₇

Molecular Weight: 408.33

Keep away from moisture

Storage: Powder: -20°C for 3 years | In solvent: -80°C for 1 year

Actual storage temperature shall be subject to the COA.



Biological Description

| | |
|---------------|--|
| Description | γ -Glu-Phe TFA(7432-24-8 free base) is a dipeptide composed of gamma-glutamate and phenylalanine and is a proteolytic breakdown product of larger proteins. It is probably formed by transpeptidation between glutathione and the corresponding amino acid, catalyzed by gamma-glutamyl transpeptidase. |
| Targets(IC50) | Endogenous Metabolite |

Solubility Information

| | |
|------------|---|
| Solubility | H ₂ O: 50 mg/mL (122.45 mM), Sonication is recommended. (< 1 mg/ml refers to the product slightly soluble or insoluble) |
|------------|---|

Preparing Stock Solutions

| | 1mg | 5mg | 10mg |
|-------|-----------|-----------|-----------|
| 1 mM | 2.449 mL | 12.245 mL | 24.490 mL |
| 5 mM | 0.4898 mL | 2.449 mL | 4.898 mL |
| 10 mM | 0.2449 mL | 1.2245 mL | 2.449 mL |
| 50 mM | 0.049 mL | 0.2449 mL | 0.4898 mL |

Please select the appropriate solvent to prepare the stock solution, according to the solubility of the product in different solvents. Please use it as soon as possible.

Note: The dilution table applies only to solid products. For liquid products, please calculate the stock solution based on the stated concentration and/or density.

Reference

Yang J, et al. Synthesis and Sensory Characteristics of Kokumi γ -[Glu]_n-Phe in the Presence of Glutamine and Phenylalanine: Glutaminase from *Bacillus amyloliquefaciens* or *Aspergillus oryzae* as the Catalyst. *J Agric Food Chem.* 2017 Oct 4;65(39):8696-8703.

Inhibitor · Natural Compounds · Compound Libraries · Recombinant Proteins

This product is for Research Use Only · Not for Human or Veterinary or Therapeutic Use

Tel:781-999-4286 E_mail:info@targetmol.com Address:34 Washington Street,Wellesley Hills,MA 02481