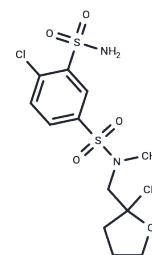


Mefruside

Chemical Properties

CAS No. :	7195-27-9
Formula:	C13H19ClN2O5S2
Molecular Weight:	382.88
Storage:	Store at low temperature Powder: -20°C for 3 years In solvent: -80°C for 1 year <small>Actual storage temperature shall be subject to the COA.</small>



Biological Description

Description	Mefruside is an orally effective diuretic that reduces tubular reabsorption of electrolytes and water, suitable for studying edema and hypertension. It inhibits urea synthesis in an in vitro rat liver perfusion model.
Targets(IC50)	Others
In vitro	Mefruside (0.3 mM, 50 minutes) exhibited a 34% inhibition rate on the urea synthesis process in isolated perfused rat livers [1]. Mefruside (0.25, 0.5, 0.75, 1, 1.25 mM) demonstrated a concentration-dependent inhibitory effect on urea synthesis in the isolated perfused rat liver model [1].

Preparing Stock Solutions

	1mg	5mg	10mg
1 mM	2.6118 mL	13.0589 mL	26.1178 mL
5 mM	0.5224 mL	2.6118 mL	5.2236 mL
10 mM	0.2612 mL	1.3059 mL	2.6118 mL
50 mM	0.0522 mL	0.2612 mL	0.5224 mL

Please select the appropriate solvent to prepare the stock solution, according to the solubility of the product in different solvents. Please use it as soon as possible.

Note: The dilution table applies only to solid products. For liquid products, please calculate the stock solution based on the stated concentration and/or density.

Reference

el Walily AF. Simultaneous determination of the binary mixture of nifedipine and mefruside using derivate spectroscopy, capillary gas-liquid chromatography and high performance liquid chromatography. Acta Pharm Hung. 1997 Mar-May;67(2-3):89-97.

Landmark K, et al. Nitrendipine and mefruside in elderly hypertensives: effects on blood pressure, cardiac output, cerebral blood flow and metabolic parameters. J Hum Hypertens. 1995 Apr;9(4):281-5.

Höfling B, et al. [Therapy of mild to moderate hypertension. Efficacy and tolerance of Amlodipine in comparison with the combination nifedipine/mefruside]. Fortschr Med. 1991 May 20;109(15):327-30.

Kirsten R, et al. Influence of co-dergocrine mesilate/nifedipine compared to mefruside/nifedipine on circadian blood pressure in patients with essential hypertension. J Hum Hypertens. 1990 Aug;4(4):461-4.

Häussinger D, et al. Liver carbonic anhydrase and urea synthesis. Hepatology. 1988 Mar-Apr;8(2):435.

Inhibitor · Natural Compounds · Compound Libraries · Recombinant Proteins

This product is for Research Use Only · Not for Human or Veterinary or Therapeutic Use

Tel:781-999-4286 E_mail:info@targetmol.com Address:34 Washington Street,Wellesley Hills,MA 02481