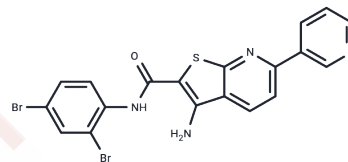


SOD1-Derlin-1 inhibitor-1

Chemical Properties

CAS No. :	840461-03-2
Formula:	C ₁₉ H ₁₂ Br ₂ N ₄ O ₅
Molecular Weight:	504.2
Storage:	Powder: -20°C for 3 years In solvent: -80°C for 1 year Actual storage temperature shall be subject to the COA.



Biological Description

Description	SOD1-Derlin-1 inhibitor-1 (SOD1-Derlin-1 Inhibitor 56-20) (compound 56-20) is an inhibitor of SOD1-Derlin-1 interaction. SOD1-Derlin-1 inhibitor-1 inhibits SOD1 G93A - Derlin-1 complex with an IC ₅₀ value of 7.11 μM. SOD1-Derlin-1 inhibitor-1 can be used for amyotrophic lateral sclerosis research[1].
Targets(IC ₅₀)	Others
In vitro	SOD1-Derlin-1 inhibitor-1, at a concentration of 50 μM and an exposure time of 16 hours, effectively inhibits the SOD1 G93A-Derlin-1 complex, achieving an IC ₅₀ value of 7.11 μM [1]. Additionally, when administered at a lower concentration of 250 nM for 6 hours, it selectively binds to SOD1 G93A, demonstrating a K _d value of 81.1 μM [1].

Solubility Information

Solubility	DMSO: 1 mg/mL (1.98 mM),Sonication is recommended. (< 1 mg/ml refers to the product slightly soluble or insoluble)
------------	---

Preparing Stock Solutions

	1mg	5mg	10mg
1 mM	1.9833 mL	9.9167 mL	19.8334 mL
5 mM	0.3967 mL	1.9833 mL	3.9667 mL
10 mM	0.1983 mL	0.9917 mL	1.9833 mL
50 mM	0.0397 mL	0.1983 mL	0.3967 mL

Please select the appropriate solvent to prepare the stock solution, according to the solubility of the product in different solvents. Please use it as soon as possible.

Note: The dilution table applies only to solid products. For liquid products, please calculate the stock solution based on the stated concentration and/or density.

Reference

Tsuburaya N, et al. A small-molecule inhibitor of SOD1-Derlin-1 interaction ameliorates pathology in an ALS mouse model. Nat Commun. 2018 Jul 10;9(1):2668.

Inhibitor · Natural Compounds · Compound Libraries · Recombinant Proteins

This product is for Research Use Only · Not for Human or Veterinary or Therapeutic Use

Tel:781-999-4286 E_mail:info@targetmol.com Address:34 Washington Street,Wellesley Hills,MA 02481