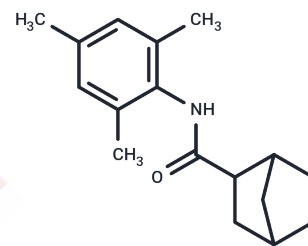


ML213

Chemical Properties

CAS No. : 489402-47-3
 Formula: C₁₇H₂₃NO
 Molecular Weight: 257.37
 Storage: Powder: -20°C for 3 years | In solvent: -80°C for 1 year
Actual storage temperature shall be subject to the COA.



Biological Description

Description	ML213 (CID-3111211) is a selective activator of Kv7.2 (KCNQ2) and Kv7.4 (KCNQ4) channels, enhances Kv7.2 and Kv7.4 channels with EC50s of 230 and 510 nM, respectively.
Targets(IC50)	Potassium Channel

Solubility Information

Solubility	DMSO: 9 mg/mL (34.97 mM),Sonication is recommended. Ethanol: 30 mg/mL (116.56 mM),Sonication is recommended. (< 1 mg/ml refers to the product slightly soluble or insoluble)
In vivo Formulation	10% DMSO+40% PEG300+5% Tween 80+45% Saline: 1 mg/mL (3.89 mM),Sonication is recommended. <i>Please add the solvents sequentially, clarifying the solution as much as possible before adding the next one. Dissolve by heating and/or sonication if necessary. Working solution is recommended to be prepared and used immediately. The formulation provided above is for reference purposes only. In vivo formulations may vary and should be modified based on specific experimental conditions.</i>

Preparing Stock Solutions

	1mg	5mg	10mg
1 mM	3.8855 mL	19.4273 mL	38.8546 mL
5 mM	0.7771 mL	3.8855 mL	7.7709 mL
10 mM	0.3885 mL	1.9427 mL	3.8855 mL
50 mM	0.0777 mL	0.3885 mL	0.7771 mL

Please select the appropriate solvent to prepare the stock solution, according to the solubility of the product in different solvents. Please use it as soon as possible.

Note: The dilution table applies only to solid products. For liquid products, please calculate the stock solution based on the stated concentration and/or density.

Reference

Yu, H., et al. Discovery, synthesis, and structure-activity relationship of a series of N-aryl-bicyclo[2.2.1]heptane-2-carboxamides: Characterization of ML213 as a novel KCNQ2 and KCNQ4 potassium channel opener. ACS Chem. Neurosci. 2(10), 572-577 (2011).

Inhibitor · Natural Compounds · Compound Libraries · Recombinant Proteins

This product is for Research Use Only · Not for Human or Veterinary or Therapeutic Use

Tel: 781-999-4286 E_mail: info@targetmol.com Address: 34 Washington Street, Wellesley Hills, MA 02481