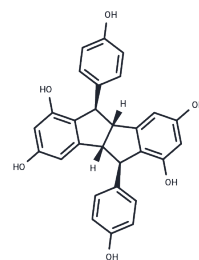


Pallidol

Chemical Properties

CAS No. :	105037-88-5
Formula:	C ₂₈ H ₂₂ O ₆
Molecular Weight:	454.47
Storage:	Keep away from direct sunlight Powder: -20°C for 3 years In solvent: -80°C for 1 year <small>Actual storage temperature shall be subject to the COA.</small>



Biological Description

Description	Pallidol (Pallidol A) is a resveratrol dimer extracted from red wine, a selective singlet oxygen quencher with antioxidant and antifungal activities.
Targets(IC50)	Antioxidant, Reactive Oxygen Species, Antibacterial, Antifungal
In vitro	<p>Methods and results: In this report, with the use of the EPR spin-trapping technique, the scavenging and quenching effects of Pallidol on reactive oxygen species (ROS) were investigated.</p> <p>The results demonstrated that Pallidol showed strong quenching effects on singlet oxygen at very low concentrations, but it was ineffective to scavenge hydroxyl radicals or superoxide anions. Further kinetic study revealed that the reaction of Pallidol with singlet oxygen had an extremely high rate constant ($k(a)=1.71 \times 10^{10}$). [1]</p>

Preparing Stock Solutions

	1mg	5mg	10mg
1 mM	2.2004 mL	11.0018 mL	22.0037 mL
5 mM	0.4401 mL	2.2004 mL	4.4007 mL
10 mM	0.220 mL	1.1002 mL	2.2004 mL
50 mM	0.044 mL	0.220 mL	0.4401 mL

Please select the appropriate solvent to prepare the stock solution, according to the solubility of the product in different solvents. Please use it as soon as possible.

Note: The dilution table applies only to solid products. For liquid products, please calculate the stock solution based on the stated concentration and/or density.

Reference

He S, et al. Pallidol, a resveratrol dimer from red wine, is a selective singlet oxygen quencher. Biochem Biophys Res Commun. 2009 Feb 6;379(2):283-7.

Inhibitor · Natural Compounds · Compound Libraries · Recombinant Proteins

This product is for Research Use Only · Not for Human or Veterinary or Therapeutic Use

Tel:781-999-4286 E_mail:info@targetmol.com Address:34 Washington Street,Wellesley Hills,MA 02481