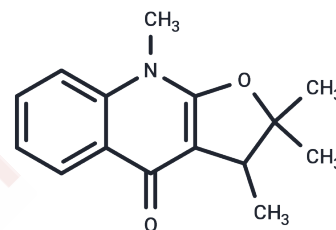


## Lemobiline

## Chemical Properties

CAS No. :	26126-76-1
Formula:	C <sub>15</sub> H <sub>17</sub> NO <sub>2</sub>
Molecular Weight:	243.3
Storage:	Powder: -20°C for 3 years   In solvent: -80°C for 1 year Actual storage temperature shall be subject to the COA.



## Biological Description

Description	Lemobiline is a bioactive chemical.
Targets(IC50)	Others

## Preparing Stock Solutions

	1mg	5mg	10mg
1 mM	4.1102 mL	20.5508 mL	41.1015 mL
5 mM	0.822 mL	4.1102 mL	8.2203 mL
10 mM	0.411 mL	2.0551 mL	4.1102 mL
50 mM	0.0822 mL	0.411 mL	0.822 mL

Please select the appropriate solvent to prepare the stock solution, according to the solubility of the product in different solvents. Please use it as soon as possible.

Note: The dilution table applies only to solid products. For liquid products, please calculate the stock solution based on the stated concentration and/or density.

## Reference

- Lange S, Rosenkrands I, Stein R, Andersen P, Kaufmann SH, Jungblut PR. Analysis of protein species differentiation among mycobacterial low-Mr-secreted proteins by narrow pH range Immobililine gel 2-DE-MALDI-MS. J Proteomics. 2014 Jan 31;97:235-44. doi: 10.1016/j.jprot.2013.06.036. Epub 2013 Jul 13. PubMed PMID: 23856608.
- Fawcett JS, Vicchio D, Chrambach A. The adsorption of large proteins in electrofocusing on immobilized pH gradients: II. Dependence on the oligomeric state of Immobililine. Electrophoresis. 1988 Sep;9(9):469-74. PubMed PMID: 3243244.
- Cherkaoui S, Zell P, Javet P. Characterization of immobililine membranes for application in a multicompartement electrolyzer for protein purification. J Biochem Biophys Methods. 1992 Aug;25(1):61-73. PubMed PMID: 1430792.
- Chan C, Warlow RS, Chapuis PH, Newland RC, Bokey EL. Immobililine-based two-dimensional gel electrophoresis: an optimised protocol for resolution of human colonic mucosal proteins. Electrophoresis. 1999 Nov;20(17):3467-71. PubMed PMID: 10608716.

**Inhibitor · Natural Compounds · Compound Libraries · Recombinant Proteins**

This product is for Research Use Only · Not for Human or Veterinary or Therapeutic Use

Tel:781-999-4286 E\_mail:info@targetmol.com Address:34 Washington Street,Wellesley Hills,MA 02481