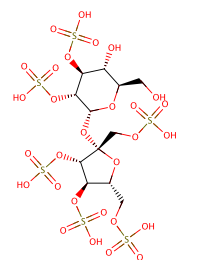


## Sucrose hexasulfate (potassium salt)

## Chemical Properties

CAS No. :	386229-70-5
Formula:	C <sub>12</sub> H <sub>16</sub> K <sub>6</sub> O <sub>29</sub> S <sub>6</sub>
Molecular Weight:	1051.22
Storage:	Powder: -20°C for 3 years   In solvent: -80°C for 1 year Actual storage temperature shall be subject to the COA.



## Biological Description

Description	Sucralfate is a gastrointestinal protectant that includes sucrose octasulfate . Sucralfate protects gastric epithelial cells against acid- and pepsin-induced damage. Sucrose hexasulfate is a polysulfated disaccharide that is used as a reference standard for sucralfate.
Targets(IC50)	Others

## Solubility Information

Solubility	H <sub>2</sub> O: 10.56 mg/mL (10.05 mM),Sonication is recommended. (< 1 mg/ml refers to the product slightly soluble or insoluble)
------------	--

## Preparing Stock Solutions

	1mg	5mg	10mg
1 mM	0.9513 mL	4.7564 mL	9.5128 mL
5 mM	0.1903 mL	0.9513 mL	1.9026 mL
10 mM	0.0951 mL	0.4756 mL	0.9513 mL
50 mM	0.019 mL	0.0951 mL	0.1903 mL

Please select the appropriate solvent to prepare the stock solution, according to the solubility of the product in different solvents. Please use it as soon as possible.

Note: The dilution table applies only to solid products. For liquid products, please calculate the stock solution based on the stated concentration and/or density.

Inhibitor · Natural Compounds · Compound Libraries · Recombinant Proteins

This product is for Research Use Only· Not for Human or Veterinary or Therapeutic Use

Tel:781-999-4286 E\_mail:info@targetmol.com Address:34 Washington Street,Wellesley Hills,MA 02481