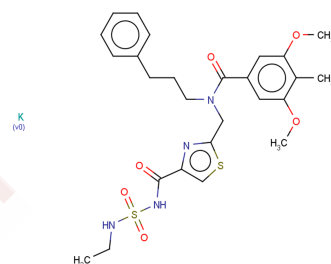


ASP6432

## Chemical Properties

CAS No. : 1282549-08-9  
 Formula: C<sub>26</sub>H<sub>32</sub>KN<sub>4</sub>O<sub>6</sub>S<sub>2</sub>  
 Molecular Weight: 599.78  
 Storage: Powder: -20°C for 3 years | In solvent: -80°C for 1 year  
 Actual storage temperature shall be subject to the COA.



## Biological Description

Description	ASP6432 is an antagonist of type 1 lysophosphatidic acid receptor (LPA1). For human LPA1 and rat LPA1, the IC <sub>50</sub> s are 11 nM and 30 nM, respectively.
Targets(IC <sub>50</sub> )	LPA Receptor, LPL Receptor
In vitro	ASP6432 inhibits proliferation of human prostate stromal cells induced by LPA.

## Preparing Stock Solutions

	1mg	5mg	10mg
1 mM	1.6673 mL	8.3364 mL	16.6728 mL
5 mM	0.3335 mL	1.6673 mL	3.3346 mL
10 mM	0.1667 mL	0.8336 mL	1.6673 mL
50 mM	0.0333 mL	0.1667 mL	0.3335 mL

Please select the appropriate solvent to prepare the stock solution, according to the solubility of the product in different solvents. Please use it as soon as possible.

Note: The dilution table applies only to solid products. For liquid products, please calculate the stock solution based on the stated concentration and/or density.

## Reference

Sakamoto K, et al. Effect of ASP6432, a Novel Type 1 Lysophosphatidic Acid Receptor Antagonist, on Urethral Function and Prostate Cell Proliferation. J Pharmacol Exp Ther. 2018 Aug;366(2):390-396.

**Inhibitor · Natural Compounds · Compound Libraries · Recombinant Proteins**

This product is for Research Use Only · Not for Human or Veterinary or Therapeutic Use

Tel: 781-999-4286 E\_mail: info@targetmol.com Address: 34 Washington Street, Wellesley Hills, MA 02481