

PD173952

## Chemical Properties

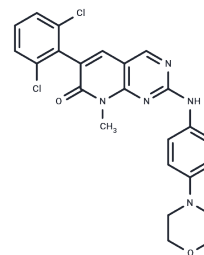
CAS No. : 305820-75-1

Formula: C<sub>24</sub>H<sub>21</sub>Cl<sub>2</sub>N<sub>5</sub>O<sub>2</sub>

Molecular Weight: 482.36

Storage: Store at low temperature, Keep away from moisture  
Powder: -20°C for 3 years | In solvent: -80°C for 1 year

Actual storage temperature shall be subject to the COA.



## Biological Description

Description	PD173952 is a tyrosine (Src) kinase and Myt1 inhibitor with antitumor activity, inhibits Lyn, Abl and Csk, and induces Bcr-Abl-dependent hematopoietic cell apoptosis.
Targets(IC50)	Apoptosis, Bcr-Abl, Src, Wee1
In vitro	<b>METHODS:</b> K562 cells were treated with PD173952 (0.05-1 μM, 12 hours), and the protein expression levels of p210Bcr-Abl or CrkL were detected by Western Blot. <b>RESULTS:</b> PD173952 could inhibit the tyrosine phosphorylation of p210 (Bcr-Abl antibody) and CrkL in K562 cells in a concentration-dependent manner. [1]

## Solubility Information

Solubility	DMSO: 15 mg/mL (31.1 mM), Sonication is recommended. ( < 1 mg/ml refers to the product slightly soluble or insoluble)
------------	--

## Preparing Stock Solutions

	1mg	5mg	10mg
1 mM	2.0731 mL	10.3657 mL	20.7314 mL
5 mM	0.4146 mL	2.0731 mL	4.1463 mL
10 mM	0.2073 mL	1.0366 mL	2.0731 mL
50 mM	0.0415 mL	0.2073 mL	0.4146 mL

Please select the appropriate solvent to prepare the stock solution, according to the solubility of the product in different solvents. Please use it as soon as possible.

Note: The dilution table applies only to solid products. For liquid products, please calculate the stock solution based on the stated concentration and/or density.

### Reference

Dorsey JF, et al. Interleukin-3 protects Bcr-Abl-transformed hematopoietic progenitor cells from apoptosis induced by Bcr-Abl tyrosine kinase inhibitors. *Leukemia*. 2002 Sep;16(9):1589-95.

Tamm C, Galitó SP, Annerén C. Differential effects on cell motility, embryonic stem cell self-renewal and senescence by diverse Src kinase family inhibitors. *Exp Cell Res*. 2012 Feb 15;318(4):336-49.

Nash CA, Séverin S, Dawood BB, Makris M, Mumford A, Wilde J, Senis YA, Watson SP. Src family kinases are essential for primary aggregation by G(i) -coupled receptors. *J Thromb Haemost*. 2010 Oct;8(10):2273-82.

Marshall SJ, et al. GPIIb-dependent platelet activation is dependent on Src kinases but not MAP kinase or cGMP-dependent kinase. *Blood*. 2004 Apr 1;103(7):2601-9.

**Inhibitor · Natural Compounds · Compound Libraries · Recombinant Proteins**

This product is for Research Use Only · Not for Human or Veterinary or Therapeutic Use

Tel:781-999-4286 E\_mail:info@targetmol.com Address:34 Washington Street,Wellesley Hills,MA 02481