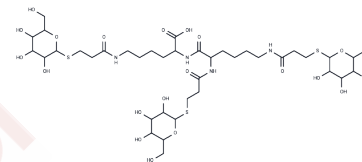


## Trimannosyldilysine

## Chemical Properties

CAS No. :	79390-81-1
Formula:	C39H68N4O21S3
Molecular Weight:	1025.16
Storage:	Powder: -20°C for 3 years   In solvent: -80°C for 1 year Actual storage temperature shall be subject to the COA.



## Biological Description

Description	Trimannosyldilysine is a bioactive chemical.
Targets(IC50)	Others

## Preparing Stock Solutions

	1mg	5mg	10mg
1 mM	0.9755 mL	4.8773 mL	9.7546 mL
5 mM	0.1951 mL	0.9755 mL	1.9509 mL
10 mM	0.0975 mL	0.4877 mL	0.9755 mL
50 mM	0.0195 mL	0.0975 mL	0.1951 mL

Please select the appropriate solvent to prepare the stock solution, according to the solubility of the product in different solvents. Please use it as soon as possible.

Note: The dilution table applies only to solid products. For liquid products, please calculate the stock solution based on the stated concentration and/or density.

## Reference

- Murray GJ, Doebber TW, Shen TY, Wu MS, Ponpipom MM, Bugianesi RL, Brady RO, Barranger JA. Targeting of synthetically glycosylated human placental glucocerebrosidase. *Biochem Med.* 1985 Oct;34(2):241-6. PubMed PMID: 4084247.
- Ponpipom MM, Bugianesi RL, Robbins JC, Doebber TW, Shen TY. Cell-specific ligands for selective drug delivery to tissues and organs. *J Med Chem.* 1981 Dec;24(12):1388-95. PubMed PMID: 7310815.
- Doebber TW, Wu MS, Bugianesi RL, Ponpipom MM, Furbish FS, Barranger JA, Brady RO, Shen TY. Enhanced macrophage uptake of synthetically glycosylated human placental beta-glucocerebrosidase. *J Biol Chem.* 1982 Mar 10;257(5):2193-9. PubMed PMID: 7061417.
- Robbins JC, Lam MH, Tripp CS, Bugianesi RL, Ponpipom MM, Shen TY. Synthetic glycopeptide substrates for receptor-mediated endocytosis by macrophages. *Proc Natl Acad Sci U S A.* 1981 Dec;78(12):7294-8. PubMed PMID: 6278467; PubMed Central PMCID: PMC349252.

**Inhibitor · Natural Compounds · Compound Libraries · Recombinant Proteins**

This product is for Research Use Only · Not for Human or Veterinary or Therapeutic Use

Tel:781-999-4286 E\_mail:info@targetmol.com Address:34 Washington Street,Wellesley Hills,MA 02481