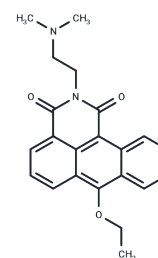


Ethonafide

Chemical Properties

CAS No. :	175293-23-9
Formula:	C ₂₂ H ₂₂ N ₂ O ₃
Molecular Weight:	362.42
Storage:	Powder: -20°C for 3 years In solvent: -80°C for 1 year Actual storage temperature shall be subject to the COA.



Biological Description

Description	Ethonafide is an anthracene-containing derivative of amonafide that belongs to the azonafide series of anticancer agents. The lack of cross-resistance in multidrug-resistant cancer cell lines and the absence of a quinone and hydroquinone moiety make ethonafide a potentially less cardiotoxic replacement for existing anthracene-containing anticancer agents. Ethonafide was cytotoxic against three human prostate cancer cell lines at nanomolar concentrations. Ethonafide was found to be better tolerated and more effective at inhibiting tumor growth compared with mitoxantrone in a human xenograft tumor regression mouse model. Mechanistically, we found that ethonafide inhibited topoisomerase II activity by stabilizing the enzyme-DNA complex, involving both topoisomerase IIalpha and -beta. In addition, ethonafide induced a potent G(2) cell cycle arrest in the DU 145 human prostate cancer cell line. By creating stable cell lines with decreased expression of topoisomerase IIalpha or -be.....
Targets(IC50)	Others

Preparing Stock Solutions

	1mg	5mg	10mg
1 mM	2.7592 mL	13.7961 mL	27.5923 mL
5 mM	0.5518 mL	2.7592 mL	5.5185 mL
10 mM	0.2759 mL	1.3796 mL	2.7592 mL
50 mM	0.0552 mL	0.2759 mL	0.5518 mL

Please select the appropriate solvent to prepare the stock solution, according to the solubility of the product in different solvents. Please use it as soon as possible.

Note: The dilution table applies only to solid products. For liquid products, please calculate the stock solution based on the stated concentration and/or density.

Inhibitor · Natural Compounds · Compound Libraries · Recombinant Proteins

This product is for Research Use Only · Not for Human or Veterinary or Therapeutic Use

Tel:781-999-4286 E_mail:info@targetmol.com Address:34 Washington Street,Wellesley Hills,MA 02481