

## Rivipansel sodium

## Chemical Properties

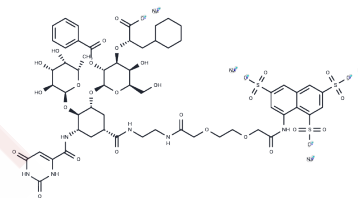
CAS No. : 1189037-60-2

Formula: C<sub>58</sub>H<sub>70</sub>N<sub>6</sub>Na<sub>4</sub>O<sub>31</sub>S<sub>3</sub>

Molecular Weight: 1535.35

Storage: Powder: -20°C for 3 years | In solvent: -80°C for 1 year

Actual storage temperature shall be subject to the COA.



## Biological Description

Description	Rivipansel sodium is a glycomimetic drug candidate that acts as a pan-selectin antagonist and reverses acute vascular occlusions in sickle cell mice.
Targets(IC50)	Others

## Preparing Stock Solutions

	1mg	5mg	10mg
1 mM	0.6513 mL	3.2566 mL	6.5132 mL
5 mM	0.1303 mL	0.6513 mL	1.3026 mL
10 mM	0.0651 mL	0.3257 mL	0.6513 mL
50 mM	0.013 mL	0.0651 mL	0.1303 mL

Please select the appropriate solvent to prepare the stock solution, according to the solubility of the product in different solvents. Please use it as soon as possible.

Note: The dilution table applies only to solid products. For liquid products, please calculate the stock solution based on the stated concentration and/or density.

**Inhibitor · Natural Compounds · Compound Libraries · Recombinant Proteins**

This product is for Research Use Only · Not for Human or Veterinary or Therapeutic Use

Tel:781-999-4286

E\_mail:info@targetmol.com

Address:34 Washington Street,Wellesley Hills,MA 02481