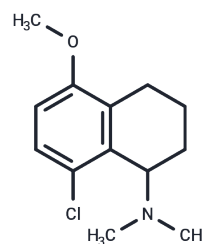


## Lometraline

## Chemical Properties

CAS No. :	39951-65-0
Formula:	C <sub>13</sub> H <sub>18</sub> ClNO
Molecular Weight:	239.74
Storage:	Powder: -20°C for 3 years   In solvent: -80°C for 1 year Actual storage temperature shall be subject to the COA.



## Biological Description

Description	Lometraline is an investigative aminotetralin derivative.
Targets(IC50)	Others

## Preparing Stock Solutions

	1mg	5mg	10mg
1 mM	4.1712 mL	20.8559 mL	41.7119 mL
5 mM	0.8342 mL	4.1712 mL	8.3424 mL
10 mM	0.4171 mL	2.0856 mL	4.1712 mL
50 mM	0.0834 mL	0.4171 mL	0.8342 mL

Please select the appropriate solvent to prepare the stock solution, according to the solubility of the product in different solvents. Please use it as soon as possible.

Note: The dilution table applies only to solid products. For liquid products, please calculate the stock solution based on the stated concentration and/or density.

## Reference

Doi H, Tateishi T, Isobe N, Yamasaki R, Ohyagi Y, Kira J. [Sporadic hemiplegic migraine-like headache in a patient with systemic lupus erythematosus]. Rinsho Shinkeigaku. 2010 May;50(5):332-4. Japanese. PubMed PMID: 20535984.

Nanri K, Niiyama K, Utsumi H, Sekine S, Katou H, Kougo K, Morihara Y, Hayashi T. [A case of migrainous infarction accompanying idiopathic thrombocytopenic purpura]. Rinsho Shinkeigaku. 2002 Sep;42(9):868-72. Japanese. PubMed PMID: 12710087.

**Inhibitor · Natural Compounds · Compound Libraries · Recombinant Proteins**

This product is for Research Use Only. Not for Human or Veterinary or Therapeutic Use

Tel:781-999-4286 E\_mail:info@targetmol.com Address:34 Washington Street,Wellesley Hills,MA 02481