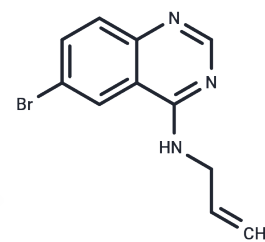


SMER28

Chemical Properties

CAS No. :	307538-42-7
Formula:	C ₁₁ H ₁₀ BrN ₃
Molecular Weight:	264.12
Storage:	Powder: -20°C for 3 years In solvent: -80°C for 1 year Actual storage temperature shall be subject to the COA.



Biological Description

Description	SMER28 is a small-molecule enhancer (SMER) of autophagy, inducing autophagy independently of rapamycin in mammalian cells via an mTOR-independent mechanism and prevented the accumulation of amyloid beta peptide.
Targets(IC50)	Autophagy
In vitro	SMER28 is a positive regulator of autophagy in a mechanism independent from the mTOR pathway. It increases autophagosome synthesis and enhances the clearance of model autophagy substrates such as A53T a-synuclein and mutant huntingtin fragments. A marked decrease in A β /APP-CTF levels and enhancement for degradation of A β /APP-CTF via autophagy is also induced by SMER28. APP-CTF and LC3-II are cocompartmentalized on SMER28 treatment[1].
Cell Research	MEF cells overexpressing β CTF are treated with autophagy-enhancing compounds (10 μ M) for 16 h. Cell lysates are analyzed by SDS-PAGE and Western blotting using anti- β CTF (6E10) and anti-tubulin antibodies.(Only for Reference)

Solubility Information

Solubility	DMSO: 60 mg/mL (227.17 mM),Sonication is recommended. (< 1 mg/ml refers to the product slightly soluble or insoluble)
In vivo Formulation	10% DMSO+40% PEG300+5% Tween 80+45% Saline: 2 mg/mL (7.57 mM),Sonication is recommended. <i>Please add the solvents sequentially, clarifying the solution as much as possible before adding the next one. Dissolve by heating and/or sonication if necessary. Working solution is recommended to be prepared and used immediately. The formulation provided above is for reference purposes only. In vivo formulations may vary and should be modified based on specific experimental conditions.</i>

Preparing Stock Solutions

	1mg	5mg	10mg
1 mM	3.7862 mL	18.9308 mL	37.8616 mL
5 mM	0.7572 mL	3.7862 mL	7.5723 mL
10 mM	0.3786 mL	1.8931 mL	3.7862 mL
50 mM	0.0757 mL	0.3786 mL	0.7572 mL

Please select the appropriate solvent to prepare the stock solution, according to the solubility of the product in different solvents. Please use it as soon as possible.

Note: The dilution table applies only to solid products. For liquid products, please calculate the stock solution based on the stated concentration and/or density.

Reference

Tian Y, et al. FASEB J. 2011, 25(6):1934-1942.

Inhibitor · Natural Compounds · Compound Libraries · Recombinant Proteins

This product is for Research Use Only · Not for Human or Veterinary or Therapeutic Use

Tel:781-999-4286 E_mail:info@targetmol.com Address:34 Washington Street,Wellesley Hills,MA 02481