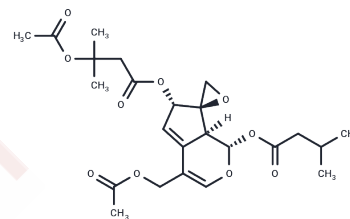


Acevaltrate

Chemical Properties

CAS No. :	25161-41-5
Formula:	C ₂₄ H ₃₂ O ₁₀
Molecular Weight:	480.50
Storage:	Powder: -20°C for 3 years In solvent: -80°C for 1 year Actual storage temperature shall be subject to the COA.



Biological Description

Description	1. Acevaltrate (Acevaltratum) displays high cytotoxicity against GLC(4), a human small-cell lung cancer cell line, and against COLO 320, a human colorectal cancer cell line, with IC ₅₀ values of 1-6 μM.
Targets(IC ₅₀)	ATPase

Solubility Information

Solubility	DMSO: 150 mg/mL (312.17 mM), Sonication is recommended. (< 1 mg/ml refers to the product slightly soluble or insoluble)
In vivo Formulation	10% DMSO+90% Corn Oil: 3.3 mg/mL (6.87 mM), Sonication is recommended. <i>Please add the solvents sequentially, clarifying the solution as much as possible before adding the next one. Dissolve by heating and/or sonication if necessary. Working solution is recommended to be prepared and used immediately. The formulation provided above is for reference purposes only. In vivo formulations may vary and should be modified based on specific experimental conditions.</i>

Preparing Stock Solutions

	1mg	5mg	10mg
1 mM	2.0812 mL	10.4058 mL	20.8117 mL
5 mM	0.4162 mL	2.0812 mL	4.1623 mL
10 mM	0.2081 mL	1.0406 mL	2.0812 mL
50 mM	0.0416 mL	0.2081 mL	0.4162 mL

Please select the appropriate solvent to prepare the stock solution, according to the solubility of the product in different solvents. Please use it as soon as possible.

Note: The dilution table applies only to solid products. For liquid products, please calculate the stock solution based on the stated concentration and/or density.

Reference

Bos R , Hendriks H , Scheffer J J C , et al. Cytotoxic potential of valerian constituents and valerian tinctures[[]].
Phytomedicine, 1998, 5(3):219-225.

Inhibitor · Natural Compounds · Compound Libraries · Recombinant Proteins

This product is for Research Use Only· Not for Human or Veterinary or Therapeutic Use

Tel:781-999-4286 E_mail:info@targetmol.com Address:34 Washington Street,Wellesley Hills,MA 02481