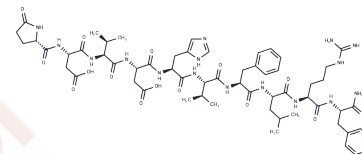


Leucomyosuppressin

Chemical Properties

CAS No. :	106884-19-9
Formula:	C59H84N16O15
Molecular Weight:	1257.418
Storage:	Keep away from moisture Powder: -20°C for 3 years In solvent: -80°C for 1 year <small>Actual storage temperature shall be subject to the COA.</small>



Biological Description

Description	Leucomyosuppressin, isolated from head extracts of the cockroach <i>Leucophaea maderae</i> , inhibits evoked transmitter release at the mealworm neuromuscular junction.
Targets(IC50)	Others,Endogenous Metabolite

Preparing Stock Solutions

	1mg	5mg	10mg
1 mM	0.7953 mL	3.9764 mL	7.9528 mL
5 mM	0.1591 mL	0.7953 mL	1.5906 mL
10 mM	0.0795 mL	0.3976 mL	0.7953 mL
50 mM	0.0159 mL	0.0795 mL	0.1591 mL

Please select the appropriate solvent to prepare the stock solution, according to the solubility of the product in different solvents. Please use it as soon as possible.

Note: The dilution table applies only to solid products. For liquid products, please calculate the stock solution based on the stated concentration and/or density.

Reference

- Maestro JL, Tobe SS, Belles X. Leucomyosuppressin modulates cardiac rhythm in the cockroach *Blattella germanica*. *J Insect Physiol.* 2011 Dec;57(12):1677-81. doi: 10.1016/j.jinsphys.2011.09.001. Epub 2011 Sep 8. PubMed PMID: 21925505.
- Söhler S, Neupert S, Predel R, Nichols R, Stengl M. Localization of leucomyosuppressin in the brain and circadian clock of the cockroach *Leucophaea maderae*. *Cell Tissue Res.* 2007 May;328(2):443-52. Epub 2007 Jan 10. PubMed PMID: 17216199.
- Vilaplana L, Castresana J, Bellés X. The cDNA for leucomyosuppressin in *Blattella germanica* and molecular evolution of insect myosuppressins. *Peptides.* 2004 Nov;25(11):1883-9. PubMed PMID: 15501519.
- Bendena WG, Donly BC, Fuse M, Lee E, Lange AB, Orchard I, Tobe SS. Molecular characterization of the inhibitory myotropic peptide leucomyosuppressin. *Peptides.* 1997;18(1):157-63. Review. PubMed PMID: 9114465.

Inhibitor · Natural Compounds · Compound Libraries · Recombinant Proteins

This product is for Research Use Only · Not for Human or Veterinary or Therapeutic Use

Tel:781-999-4286 E_mail:info@targetmol.com Address:34 Washington Street,Wellesley Hills,MA 02481