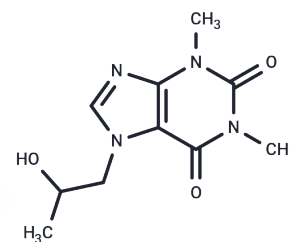


Proxyphylline

Chemical Properties

| | |
|-------------------|---|
| CAS No. : | 603-00-9 |
| Formula: | C ₁₀ H ₁₄ N ₄ O ₃ |
| Molecular Weight: | 238.24 |
| Storage: | Powder: -20°C for 3 years In solvent: -80°C for 1 year Actual storage temperature shall be subject to the COA. |



Biological Description

| | |
|---------------|--|
| Description | Proxyphylline (7-(2-Hydroxypropyl)theophylline) is a dual of adenosine A1/A2a receptor inhibitor and phosphodiesterase (PDE) inhibitor. Proxyphylline acts as a cardiac stimulant, vasodilator and bronchodilator. |
| Targets(IC50) | Adenosine Receptor,PDE |
| In vitro | Proxyphylline inhibits tracheal PDE-activity and half-maximum relaxation of tracheal smooth muscle is obtained with 100 µg/mL proxyphylline[1] |

Solubility Information

| | |
|---------------------|--|
| Solubility | DMSO: 70 mg/mL (293.82 mM),Sonication is recommended. (< 1 mg/ml refers to the product slightly soluble or insoluble) |
| In vivo Formulation | 10% DMSO+40% PEG300+5% Tween 80+45% Saline: 2 mg/mL (8.39 mM),Sonication is recommended. <i>Please add the solvents sequentially, clarifying the solution as much as possible before adding the next one. Dissolve by heating and/or sonication if necessary. Working solution is recommended to be prepared and used immediately. The formulation provided above is for reference purposes only. In vivo formulations may vary and should be modified based on specific experimental conditions.</i> |

Preparing Stock Solutions

| | 1mg | 5mg | 10mg |
|-------|-----------|------------|------------|
| 1 mM | 4.1974 mL | 20.9872 mL | 41.9745 mL |
| 5 mM | 0.8395 mL | 4.1974 mL | 8.3949 mL |
| 10 mM | 0.4197 mL | 2.0987 mL | 4.1974 mL |
| 50 mM | 0.0839 mL | 0.4197 mL | 0.8395 mL |

Please select the appropriate solvent to prepare the stock solution, according to the solubility of the product in different solvents. Please use it as soon as possible.

Note: The dilution table applies only to solid products. For liquid products, please calculate the stock solution based on the stated concentration and/or density.

Reference

- Kukovetz W R , G Pöch, Holzmann S . Overadditive synergism between theophylline, diprophylline and proxyphylline in tracheal smooth muscle relaxation[J]. *Arzneimittel-Forschung*, 1983, 33(10):1450-1454.
- Takeda K , Katano Y , Nakagawa Y , et al. EFFECTS OF AMINOPHYLLINE, PROXYPHYLLINE AND A PROXYPHYLLINE-MELILOTUS EXTRACT-RUTIN MIXTURE (THEOESBERIVEN) ON THE HEART AND THE CORONARY CIRCULATION[J]. *The Japanese Journal of Pharmacology*, 1977, 27(5):709-720.
- Rasmussen F V , Waldorff S , Madsen L . Pharmacokinetics and bronchodilatory effect of proxyphylline and theophylline.[J]. *Eur J Respir Dis*, 1984, 65(1):20-27.

Inhibitor · Natural Compounds · Compound Libraries · Recombinant Proteins

This product is for Research Use Only· Not for Human or Veterinary or Therapeutic Use

Tel:781-999-4286 E_mail:info@targetmol.com Address:34 Washington Street,Wellesley Hills,MA 02481