

6-[2-(3,5-dimethoxyphenyl)ethenyl]-2-methoxy-3-[3-methyl-6-(prop-1-en-2-yl)cyclohex-2-en-yl]phenol

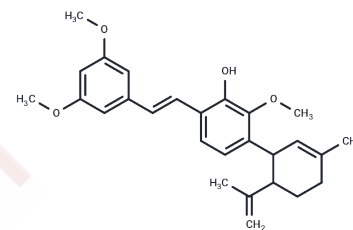
Chemical Properties

CAS No. :

Formula: C₂₇H₃₂O₄

Molecular Weight: 420.55

Storage: Powder: -20°C for 3 years | In solvent: -80°C for 1 year
Actual storage temperature shall be subject to the COA.



Biological Description

Description	6-[(1E)-2-(3,5-dimethoxyphenyl)ethenyl]-2-methoxy-3-[3-methyl-6-(prop-1-en-2-yl)cyclohex-2-en-1-yl]phenol is a high-purity biochemical reagent suitable for biochemical experiments and drug synthesis research.
-------------	------------------------------------------------------------------------------------------------------------------------------------------------------------------------------------------------------------------

Preparing Stock Solutions

	1mg	5mg	10mg
1 mM	2.3778 mL	11.8892 mL	23.7784 mL
5 mM	0.4756 mL	2.3778 mL	4.7557 mL
10 mM	0.2378 mL	1.1889 mL	2.3778 mL
50 mM	0.0476 mL	0.2378 mL	0.4756 mL

Please select the appropriate solvent to prepare the stock solution, according to the solubility of the product in different solvents. Please use it as soon as possible.

Note: The dilution table applies only to solid products. For liquid products, please calculate the stock solution based on the stated concentration and/or density.

Inhibitor · Natural Compounds · Compound Libraries · Recombinant Proteins

This product is for Research Use Only · Not for Human or Veterinary or Therapeutic Use

Tel:781-999-4286 E_mail:info@targetmol.com Address:34 Washington Street,Wellesley Hills,MA 02481