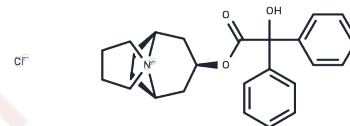


Trospium chloride

Chemical Properties

CAS No. :	10405-02-4
Formula:	C ₂₅ H ₃₀ ClNO ₃
Molecular Weight:	427.964
Storage:	Powder: -20°C for 3 years In solvent: -80°C for 1 year Actual storage temperature shall be subject to the COA.



Biological Description

Description	Trospium chloride (Spasmex) is an antispasmodic and anticholinergic agent used to treat urinary incontinence and overactive bladder syndrome. Trospium chloride has not been implicated in causing liver enzyme elevations or clinically apparent acute liver injury.
Targets(IC50)	AChR

Solubility Information

Solubility	H ₂ O: 250 mg/mL (584.16 mM),Sonication is recommended. DMSO: 4.28 mg/mL (10 mM),Sonication is recommended. Ethanol: 13 mg/mL (30.38 mM),Sonication is recommended. (< 1 mg/ml refers to the product slightly soluble or insoluble)
In vivo Formulation	10% DMSO+40% PEG300+5% Tween 80+45% Saline: 1 mg/mL (2.34 mM),Sonication is recommended. <i>Please add the solvents sequentially, clarifying the solution as much as possible before adding the next one. Dissolve by heating and/or sonication if necessary. Working solution is recommended to be prepared and used immediately. The formulation provided above is for reference purposes only. In vivo formulations may vary and should be modified based on specific experimental conditions.</i>

Preparing Stock Solutions

	1mg	5mg	10mg
1 mM	2.3367 mL	11.6833 mL	23.3667 mL
5 mM	0.4673 mL	2.3367 mL	4.6733 mL
10 mM	0.2337 mL	1.1683 mL	2.3367 mL
50 mM	0.0467 mL	0.2337 mL	0.4673 mL

Please select the appropriate solvent to prepare the stock solution, according to the solubility of the product in different solvents. Please use it as soon as possible.

Note: The dilution table applies only to solid products. For liquid products, please calculate the stock solution based on the stated concentration and/or density.

Reference

Karaman A, et al. Urology. 2013 Jul;82(1):194-200.

Inhibitor · Natural Compounds · Compound Libraries · Recombinant Proteins

This product is for Research Use Only · Not for Human or Veterinary or Therapeutic Use

Tel:781-999-4286 E_mail:info@targetmol.com Address:34 Washington Street,Wellesley Hills,MA 02481