

PluriSIn #2

Chemical Properties

CAS No. : 56563-17-8

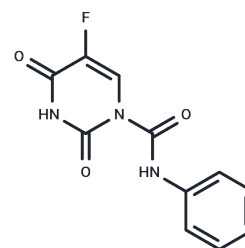
Formula: C₁₁H₈FN₃O₃

Molecular Weight: 249.2

Storage: The compound is unstable in solution. Please use soon, Keep away from direct sunlight, Store under nitrogen

Powder: -20°C for 3 years

Actual storage temperature shall be subject to the COA.



Biological Description

Description	PluriSIn #2 acts as a selective transcriptional inhibitor of topoisomerase II α (TOP2A) and effectively eliminates undifferentiated human pluripotent stem cells (hPSCs)[1].
Targets(IC50)	Topoisomerase
In vitro	PluriSIn #2 (20 μ M; 12 hours) treatment reduces TOP2A expression at the protein level[1]. A 24h exposure of PluriSIn #2 (20 μ M) is sufficient to induce massive cell death in hPSCs, but doesn't affect the viability of various other cell types derived from them[1]. Western Blot Analysis[1]Cell Line: B153 and HUES9 human pluripotent stem cells (hPSCs)

Solubility Information

Solubility	DMSO: 4 mg/mL (16.05 mM), Sonication is recommended. (< 1 mg/ml refers to the product slightly soluble or insoluble)
------------	---

Preparing Stock Solutions

	1mg	5mg	10mg
1 mM	4.0128 mL	20.0642 mL	40.1284 mL
5 mM	0.8026 mL	4.0128 mL	8.0257 mL
10 mM	0.4013 mL	2.0064 mL	4.0128 mL
50 mM	0.0803 mL	0.4013 mL	0.8026 mL

Please select the appropriate solvent to prepare the stock solution, according to the solubility of the product in different solvents. Please use it as soon as possible.

Note: The dilution table applies only to solid products. For liquid products, please calculate the stock solution based on the stated concentration and/or density.

Reference

Uri Ben-David, et al. Brief reports: Controlling the survival of human pluripotent stem cells by small molecule-based targeting of topoisomerase II alpha. Stem Cells. 2015 Mar;33(3):1013-9.

Inhibitor · Natural Compounds · Compound Libraries · Recombinant Proteins

This product is for Research Use Only · Not for Human or Veterinary or Therapeutic Use

Tel:781-999-4286 E_mail:info@targetmol.com Address:34 Washington Street,Wellesley Hills,MA 02481