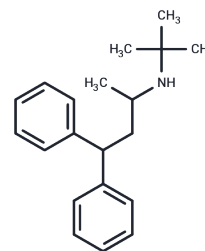


Terodiline

Chemical Properties

CAS No. :	15793-40-5
Formula:	C ₂₀ H ₂₇ N
Molecular Weight:	281.44
Storage:	Powder: -20°C for 3 years In solvent: -80°C for 1 year Actual storage temperature shall be subject to the COA.



Biological Description

Description	Terodiline is a second amine with anticholinergic and calcium antagonistic properties that blocks the hERG current (IC ₅₀ : 375 nM). Terodiline is cardiotoxic and has been used in the study of disorders caused by urethral muscle instability.
Targets(IC ₅₀)	Calcium Channel, AChR, Potassium Channel
In vivo	In Hartley guinea pigs weighing 200-600 g (female or male), Terodiline (80 mg/kg; administered subcutaneously) yielded an ID ₅₀ of 24±6 mg/kg. Higher doses were lethal [1].

Solubility Information

Solubility	DMSO: 100 mg/mL (355.32 mM), Sonication is recommended. (< 1 mg/ml refers to the product slightly soluble or insoluble)
------------	--

Preparing Stock Solutions

	1mg	5mg	10mg
1 mM	3.5532 mL	17.7658 mL	35.5316 mL
5 mM	0.7106 mL	3.5532 mL	7.1063 mL
10 mM	0.3553 mL	1.7766 mL	3.5532 mL
50 mM	0.0711 mL	0.3553 mL	0.7106 mL

Please select the appropriate solvent to prepare the stock solution, according to the solubility of the product in different solvents. Please use it as soon as possible.

Note: The dilution table applies only to solid products. For liquid products, please calculate the stock solution based on the stated concentration and/or density.

Reference

Ruth L Martin, et al. In vitro preclinical cardiac assessment of tolterodine and terodiline: multiple factors predict the clinical experience. J Cardiovasc Pharmacol. 2006 Nov;48(5):199-206.

H D Langtry, et al. Terodiline. A review of its pharmacological properties, and therapeutic use in the treatment of urinary incontinence. Drugs. 1990 Nov;40(5):748-61.

Inhibitor · Natural Compounds · Compound Libraries · Recombinant Proteins

This product is for Research Use Only· Not for Human or Veterinary or Therapeutic Use

Tel:781-999-4286 E_mail:info@targetmol.com Address:34 Washington Street,Wellesley Hills,MA 02481