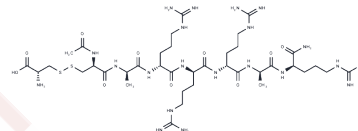


## Etelcalcetide

## Chemical Properties

CAS No. :	1262780-97-1
Formula:	C <sub>38</sub> H <sub>73</sub> N <sub>2</sub> O <sub>10</sub> S <sub>2</sub>
Molecular Weight:	1048.26
Storage:	Keep away from moisture Powder: -20°C for 3 years   In solvent: -80°C for 1 year <small>Actual storage temperature shall be subject to the COA.</small>



## Biological Description

Description	Etelcalcetide (AMG 416) is a synthetic peptide that serves as an activator of the calcium-sensing receptor (CaSR) and is used as a calcimimetic drug for treating secondary hyperparathyroidism in patients undergoing hemodialysis.
Targets(IC50)	CaSR

## Preparing Stock Solutions

	1mg	5mg	10mg
1 mM	0.954 mL	4.7698 mL	9.5396 mL
5 mM	0.1908 mL	0.954 mL	1.9079 mL
10 mM	0.0954 mL	0.477 mL	0.954 mL
50 mM	0.0191 mL	0.0954 mL	0.1908 mL

Please select the appropriate solvent to prepare the stock solution, according to the solubility of the product in different solvents. Please use it as soon as possible.

Note: The dilution table applies only to solid products. For liquid products, please calculate the stock solution based on the stated concentration and/or density.

## Reference

Block GA, et al. Effect of Etelcalcetide vs Cinacalcet on Serum Parathyroid Hormone in Patients Receiving Hemodialysis With Secondary Hyperparathyroidism: A Randomized Clinical Trial. JAMA. 2017 Jan 10;317(2):156-164.

**Inhibitor · Natural Compounds · Compound Libraries · Recombinant Proteins**

This product is for Research Use Only · Not for Human or Veterinary or Therapeutic Use

Tel:781-999-4286 E\_mail:info@targetmol.com Address:34 Washington Street,Wellesley Hills,MA 02481