

Lantadene C

Chemical Properties

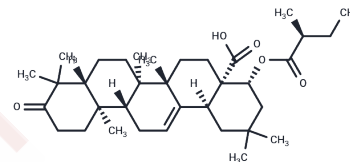
CAS No. : 88034-27-9

Formula: C₃₅H₅₄O₅

Molecular Weight: 554.80

Storage: Powder: -20°C for 3 years | In solvent: -80°C for 1 year

Actual storage temperature shall be subject to the COA.



Biological Description

Description	Lantadene C is a hepatotoxicant from <i>Lantana camara</i> var. <i>aculeata</i> .
Targets(IC50)	Others

Preparing Stock Solutions

	1mg	5mg	10mg
1 mM	1.8025 mL	9.0123 mL	18.0245 mL
5 mM	0.3605 mL	1.8025 mL	3.6049 mL
10 mM	0.1802 mL	0.9012 mL	1.8025 mL
50 mM	0.036 mL	0.1802 mL	0.3605 mL

Please select the appropriate solvent to prepare the stock solution, according to the solubility of the product in different solvents. Please use it as soon as possible.

Note: The dilution table applies only to solid products. For liquid products, please calculate the stock solution based on the stated concentration and/or density.

Reference

Sharma OP, Vaid J, Pattabhi V, Bhutani KK. Biological action of lantadene C, a new hepatotoxicant from *Lantana camara* var. *aculeata*. *J Biochem Toxicol*. 1992 Summer;7(2):73-9. PubMed PMID: 1404245.

Dong Y, Zhang M, Ling B. [Antifeeding effects of crude lantadene from *Lantana camara* on *Plutella xylostella* and *Spodoptera litura* larvae]. *Ying Yong Sheng Tai Xue Bao*. 2005 Dec;16(12):2361-4. Chinese. PubMed PMID: 16515188.

Inhibitor · Natural Compounds · Compound Libraries · Recombinant Proteins

This product is for Research Use Only · Not for Human or Veterinary or Therapeutic Use

Tel:781-999-4286 E_mail:info@targetmol.com Address:34 Washington Street,Wellesley Hills,MA 02481