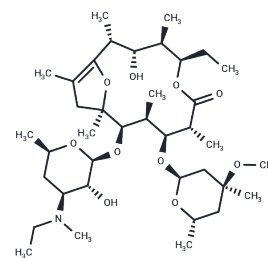


## Alemcinal

## Chemical Properties

CAS No. :	150785-53-8
Formula:	C <sub>38</sub> H <sub>67</sub> N <sub>10</sub> O <sub>10</sub>
Molecular Weight:	697.94
Storage:	Powder: -20°C for 3 years   In solvent: -80°C for 1 year Actual storage temperature shall be subject to the COA.



## Biological Description

Description	Alemcinal is a Gastrointestinal Agent.
Targets(IC50)	Others

## Preparing Stock Solutions

	1mg	5mg	10mg
1 mM	1.4328 mL	7.1639 mL	14.3279 mL
5 mM	0.2866 mL	1.4328 mL	2.8656 mL
10 mM	0.1433 mL	0.7164 mL	1.4328 mL
50 mM	0.0287 mL	0.1433 mL	0.2866 mL

Please select the appropriate solvent to prepare the stock solution, according to the solubility of the product in different solvents. Please use it as soon as possible.

Note: The dilution table applies only to solid products. For liquid products, please calculate the stock solution based on the stated concentration and/or density.

### Reference

Wang J, Nong L, Wei Y, Qin S, Zhou Y, Tang Y. Association of osteopontin polymorphisms with nasopharyngeal carcinoma risk. *Hum Immunol*. 2014 Jan;75(1):76-80. doi: 10.1016/j.humimm.2013.09.014. Epub 2013 Oct 9. PubMed PMID: 24120738.

Stevens JE, Jones KL, Rayner CK, Horowitz M. Pathophysiology and pharmacotherapy of gastroparesis: current and future perspectives. *Expert Opin Pharmacother*. 2013 Jun;14(9):1171-86. doi: 10.1517/14656566.2013.795948. Epub 2013 May 11. Review. PubMed PMID: 23663133.

Wang CH, Wang LC, Jiang X, Lan L, Liu L, Sun Y, Wang BX. [Effect of interstitial cells of Cajal on gastrointestinal motility induced by motilin receptor agonist ABT-229]. *Zhonghua Er Ke Za Zhi*. 2010 Apr;48(4):254-9. Chinese. PubMed PMID: 20654011.

Mitselos A, Vanden Berghe P, Peeters TL, Depoortere I. Differences in motilin receptor desensitization after stimulation with motilin or motilides are due to alternative receptor trafficking. *Biochem Pharmacol*. 2008 Mar 1;75(5):1115-28. Epub 2007 Nov 19. PubMed PMID: 18096134.

**Inhibitor · Natural Compounds · Compound Libraries · Recombinant Proteins**

This product is for Research Use Only · Not for Human or Veterinary or Therapeutic Use

Tel:781-999-4286 E\_mail:info@targetmol.com Address:34 Washington Street,Wellesley Hills,MA 02481