

## coreopsin

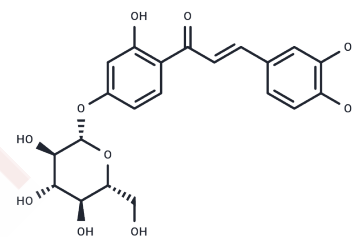
## Chemical Properties

CAS No. : 499-29-6

Formula: C<sub>21</sub>H<sub>22</sub>O<sub>10</sub>

Molecular Weight: 434.39

Storage: Keep away from moisture, Keep away from direct sunlight  
 Powder: -20°C for 3 years | In solvent: -80°C for 1 year  
*Actual storage temperature shall be subject to the COA.*



## Biological Description

Description	Coreopsin(Butein-4-O-β-D-glucopyranoside) is one of the main components from Coreopsis tinctoria Nutt. Flower(CTF). CTF has been used traditionally in China for treating hypertension and diabetes as well as reducing body weight and blood fat.
Targets(IC50)	Others

## Solubility Information

Solubility	DMSO: 50 mg/mL (115.1 mM), Sonication is recommended. (< 1 mg/ml refers to the product slightly soluble or insoluble)
------------	--------------------------------------------------------------------------------------------------------------------------

## Preparing Stock Solutions

	1mg	5mg	10mg
1 mM	2.3021 mL	11.5104 mL	23.0208 mL
5 mM	0.4604 mL	2.3021 mL	4.6042 mL
10 mM	0.2302 mL	1.151 mL	2.3021 mL
50 mM	0.046 mL	0.2302 mL	0.4604 mL

Please select the appropriate solvent to prepare the stock solution, according to the solubility of the product in different solvents. Please use it as soon as possible.

Note: The dilution table applies only to solid products. For liquid products, please calculate the stock solution based on the stated concentration and/or density.

## Reference

Li Y, Huang C, Fu W, Zhang H, Lao Y, Zhou H, Tan H, Xu H. Screening of the active fractions from the Coreopsis tinctoria Nutt. Flower on diabetic endothelial protection and determination of the underlying mechanism. J Ethnopharmacol. 2020 May 10;253:112645.

**Inhibitor · Natural Compounds · Compound Libraries · Recombinant Proteins**

This product is for Research Use Only · Not for Human or Veterinary or Therapeutic Use

Tel:781-999-4286 E\_mail:info@targetmol.com Address:34 Washington Street,Wellesley Hills,MA 02481