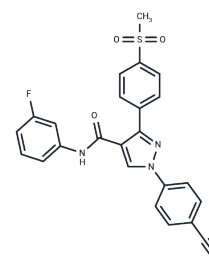


## CM121

## Chemical Properties

CAS No. :	2204230-40-8
Formula:	C <sub>24</sub> H <sub>17</sub> FN <sub>4</sub> O <sub>3</sub> S
Molecular Weight:	460.48
Storage:	Powder: -20°C for 3 years   In solvent: -80°C for 1 year Actual storage temperature shall be subject to the COA.



## Biological Description

Description	CM121 is a reversible inhibitor of ALDH1A2 that acts specifically on the active site, exhibiting an IC <sub>50</sub> of 0.54 μM and a K <sub>d</sub> of 1.1 μM. It exerts its inhibitory effect through multiple hydrophobic interactions.
Targets(IC <sub>50</sub> )	Others,Dehydrogenase
In vitro	CM121 engages with the main-chain amides of Cys320 and Thr321, as well as the side-chains of Thr321 and Asn187, through its methylsulfonyl oxygen. Moreover, CM121 forms π-π stacking interactions with the side chains of PHE188 and PHE314 via its methylsulfonyl benzene and benzylnitrile rings[1].

## Preparing Stock Solutions

	1mg	5mg	10mg
1 mM	2.1716 mL	10.8582 mL	21.7165 mL
5 mM	0.4343 mL	2.1716 mL	4.3433 mL
10 mM	0.2172 mL	1.0858 mL	2.1716 mL
50 mM	0.0434 mL	0.2172 mL	0.4343 mL

Please select the appropriate solvent to prepare the stock solution, according to the solubility of the product in different solvents. Please use it as soon as possible.

Note: The dilution table applies only to solid products. For liquid products, please calculate the stock solution based on the stated concentration and/or density.

## Reference

Chen Y, et al. Structural Basis of ALDH1A2 Inhibition by Irreversible and Reversible Small Molecule Inhibitors. ACS Chem Biol. 2018;13(3):582-590

**Inhibitor · Natural Compounds · Compound Libraries · Recombinant Proteins**

This product is for Research Use Only · Not for Human or Veterinary or Therapeutic Use

Tel:781-999-4286 E\_mail:info@targetmol.com Address:34 Washington Street,Wellesley Hills,MA 02481