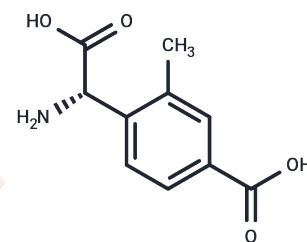


LY367385

Chemical Properties

CAS No. : 198419-91-9
 Formula: C₁₀H₁₁NO₄
 Molecular Weight: 209.2
 Storage: Powder: -20°C for 3 years | In solvent: -80°C for 1 year
 Actual storage temperature shall be subject to the COA.



Biological Description

Description	LY367385 is a highly effective and selective mGluR1a antagonist. LY367385 has neuroprotective, anticonvulsant, and antiepileptic effects. Compared with > 100 μM for mGlu5a, LY367385 has an IC ₅₀ of 8.8 μM for inhibits of quisqualate-induced phosphoinositide (PI) hydrolysis.
Targets(IC ₅₀)	FXR, GluR
In vitro	LY367385 shows greater efficacy than LY367366 and neither of these compounds influenced neuronal viability per se and it also displays effective neuroprotective effects, causing a 50% reduction in (S)-3,5-Dihydroxyphenylglycine (DHPG) potentiation at a concentration of 10 nM. LY367385 combined with N-methyl-D-aspartate (NMDA) during the toxic pulse decreases neuronal degeneration in a concentration-dependent fashion, with a maximal reduction of NMDA toxicity ranging from 40 to 60%. LY367385 fully antagonized the amplification of NMDA toxicity by DHPG under experimental conditions at higher concentrations of the antagonist[2].
In vivo	LY367385 effectively suppresses sound-induced clonic seizures in DBA/2 mice with a rapid onset, achieving a median effective dose (ED ₅₀) of 12 nM when administered intracerebroventricularly (i.c.v.) 5 minutes prior. It also significantly reduces the frequency of spontaneous electroencephalogram (EEG) spike and wave discharges in lethargic (lh/lh) mice, maintaining this effect from 30 to over 150 minutes post-administration at a concentration of 250 nM, i.c.v. Furthermore, LY367385 has been utilized in both DBA/2 and lethargic mice, in addition to direct application into the inferior colliculus of genetically epilepsy-prone rats (GEPR), demonstrating its efficacy in reducing seizures across different models. Specifically, in GEPR, a bilateral dose of 160 nM substantially mitigates clonic seizures within 2-4 hours.

Preparing Stock Solutions

	1mg	5mg	10mg
1 mM	4.7801 mL	23.9006 mL	47.8011 mL
5 mM	0.956 mL	4.7801 mL	9.5602 mL
10 mM	0.478 mL	2.3901 mL	4.7801 mL
50 mM	0.0956 mL	0.478 mL	0.956 mL

Please select the appropriate solvent to prepare the stock solution, according to the solubility of the product in different solvents. Please use it as soon as possible.

Note: The dilution table applies only to solid products. For liquid products, please calculate the stock solution based on the stated concentration and/or density.

Reference

Clark et al. (+)-2-Methyl-4-carboxyphenylglycine (LY 367385) selectively antagonises metabotropic glutamate mGluR1 receptors. *Bioorg.Med.Chem.Lett.* November 1997, 7 (21): 2777-2780.

Bruno V, et al. Neuroprotective activity of the potent and selective mGlu1a metabotropic glutamate receptor antagonist, (+)-2-methyl-4 carboxyphenylglycine (LY367385): comparison with LY357366, a broader spectrum antagonist with equal affinity for mGlu1a and mGlu5 receptors. *Neuropharmacology.* 1999 Feb;38(2):199-207.

Chapman AG, et al. Anticonvulsant actions of LY 367385 ((+)-2-methyl-4-carboxyphenylglycine) and AIDA ((RS)-1-aminoindan-1,5-dicarboxylic acid). *Eur J Pharmacol.* 1999 Feb 26;368(1):17-24.

Inhibitor · Natural Compounds · Compound Libraries · Recombinant Proteins

This product is for Research Use Only · Not for Human or Veterinary or Therapeutic Use

Tel:781-999-4286 E_mail:info@targetmol.com Address:34 Washington Street,Wellesley Hills,MA 02481